

Historic, Archive Document

Do not assume content reflects current scientific knowledge, policies, or practices.



6273



LIBRARY
RECEIVED
★ MAY 5 1928 ★
U.S. Department of Agriculture

ELLIOTT'S BULB OFFERS ~ 1928
From Now Until ~ July 1st ~ Not Later

WHY ELLIOTT BULBS ARE SO GOOD

*Every Year Our Experts Travel 8,000 Miles
to Make Your Garden Better*



THE Elliott Nurseries have never been satisfied with the risks of importing bulbs through middlemen. To avoid that we do two things. First, we specify that all orders from this bulb catalog be in by July 1st, each year. That causes no inconvenience to our friends and enables us to know, shortly thereafter, just what our demand for various bulbs will be.

With this concrete information in hand, a group of Elliott experts go to Holland in person. There they visit all the large growers and all of the important private growers who have specialized in certain flowers for generations. And not only do these experts fill your orders at first hand direct from the original source—but they also test and examine every order right on the ground so that we get nothing but perfect bulbs.

This Makes Elliott Bulbs Cheaper

THIS direct method of purchasing, first of all, insures healthy bulbs of perfect breed. Secondly, it cuts down their cost to us—and to you!

Buying direct, we buy for cash. That is a saving. Testing our bulbs, we discard the poor ones before they are shipped, not after. This means no loss from waste that you must ultimately pay for. When bulbs are imported in the usual way, they pass through the hands of two dealers before they reach you, thus doubling in price. When you buy through Elliott's you not only get the advantage of our immense quantity purchases, but you cut out at least one middleman's cost, losses and profits.

Elliott Bulbs are Tested Twice

YOU are buying perfect bulbs that have been tested right where they grow by our own men—at a distinct saving in price.

This, however, is only half of the story. Not only are your bulbs examined and tested in Holland—they are re-examined and re-tested when they arrive here. Conditions here are different, and we must be satisfied that the bulbs that were perfect over-seas are just as perfect in this country. We prove that they are before we ship them to you!

The thousands and thousands of bulbs that are constantly grown at the Elliott Nurseries are your guarantee of a *double test*—and double satisfaction.

Anybody Can Grow Elliott Bulbs

AS a consequence, Elliott bulbs give results that frequently amaze gardeners of long experience. They are easy to grow because they are perfect bulbs to begin with. No skill or training is required to make a success of anything offered you in this catalog. All you need do is follow the simple directions that come with each order—and if you were a medal-winning garden expert, you could hardly get better results.

You can't do that with ordinary, hit-or-miss bulbs. But you *can* do it with Elliott's hand-picked, twice-tested, guaranteed bulbs imported direct to your own order!

*Whether you've grown flowers before or not, Elliott Bulbs will
give you splendid flowers for a very small outlay in
money—and next to no attention!*

Pot Plants for May and June Delivery, 1928

For the convenience of people who wish to plant in May and June, we have prepared the following plants for delivery during these months. The majority of them are pot-grown and the others have been prepared for transplanting. Stock offered in this list will be delivered immediately on receipt of order. Bulbs and Plants offered in our Bulb Catalogue will not be delivered until Fall.

Elliott Nursery Company : : : 336 Magee Bldg., Pittsburgh, Pa.

ANEMONE JAPONICA (Japanese Anemone)

	Per 12	Per 100
†Alba. The blooms of this variety are snowy white, and are borne from August until well into November. 3 to 5 feet	\$2.50	\$18.00
†Queen Charlotte. If roses and anemones could bloom at the same time, this variety would be a strong rival of the pink La. France rose, at least so far as excellence of color is concerned. The soft, silvery pink, combined with the substance of the bloom, makes this Japanese Anemone of superior value for cutting.....	3.00	20.00
†Whirlwind. One of the latest introductions in the Anemone family, but has made a permanent place for itself. The flowers are fully as large, or even larger, than those of the other varieties, pure white, and produce very freely	2.50	18.00

ANEMONE "HUPEHENSIS"

This dependable hardy variety in a miniature way closely resembles Anemone Japonica, grows from 18 to 24 inches high and produces in great abundance pleasing mauve-rose flowers about 1½ inches in diameter; it is in flower from the middle of August until late in the Fall. \$2.50-\$15.00.

ANCHUSA ITALICA (Dropmore Variety)

A grand improvement on the original type of A. italica, or Italian Alkanet, and a plant which, on account of its remarkable freedom of flowering and its beautiful blue color, is sure to become one of our most popular hardy perennials. It attains a height of 5 to 6 feet and produces its pretty blue flowers, which are from 1 to 1¼ inches in diameter, throughout the entire summer. 25 cts. each; \$2.50 per doz.; \$15.00 per 100.

NEW ASTILBE ARENDSII

This new type is the result of crossing A. Davidii with A. japonica compacta, astilboides, and A. Thunbergii. The plants are of very vigorous growth, 2½ to 4 feet high, producing many branched, feathered heads of flowers. They prefer a half-shady, moist position in any ordinary garden soil.

Arendsii, Pyramidalis. Pure white. 50c each; \$5.00 per doz.

Thunbergii, Moerheimi. A new variety introduced from Europe. The panicles are extremely large, but the flowers are quite small and pure white. July. 50c each; \$5.00 per doz.

ANTIRRHINUM (Snapdragon)

The colors are radiant with feeling, blending all the dainty fine hues with a passionate crimson that actually seems to throb with emotion. No flower-garden is complete without these; and no persuasion is necessary to induce the owner of a garden to cultivate them. They belong to the inner circle of genuine friends, tested by time and permanently loved. A very pretty effect is made by blending the tall and the semi-dwarf. Half-hardy perennials.

	Per doz.	Per 100
Yellow		
Pink		
Coppery	\$1.75	\$12.00
Dwarf mixed	1.50	10.00

BAMBUSA JAPONICA (Metake of Gardens)

One of the best known of all the hardy Bamboos. The stems are often 15 feet high, with internodes 6 to 9 inches long, and with tapering leaves a foot long, smooth and shining above, glaucous beneath. It forms fine clumps when sheltered from the East wind, and will grow in drier situations than most Bamboos. Large plants, \$1.50 each; doz., \$15.00.

BUDDLEIA—BUTTERFLY BUSH

An attractive new introduction from China. It is considered a herbaceous shrub because part of the tops are Winter-killed; however, vigorous new growth is made in the Spring from the living stems and from the roots. Plants of this family are particularly valuable in that they furnish a profusion of bloom in August and September. The long, narrow panicles of bloom are sometimes a foot or more in length. In general color and effect it resembles the common lilac.

Davidi magnifica. Attractive light blue. Fine plants. 50 cts. each; \$5.00 per doz.

CALIMERIS INCISA

Grows readily in any good soil, and is an extremely dainty little perennial. The flowers are white or slightly tinged with purple and have a bronzy yellow center. 1 to 2 feet. July and August. \$2.50 per doz.; \$15.00 per 100.

CAMPANULA

Carpatica (Carpathian Bellflower). A charming little plant, growing from 6 to 12 inches high, producing the bell-like blue flowers all Summer. Especially useful in rockwork. \$2.50 per doz.; \$15.00 per 100.

Carpatica alba. White form of preceding variety. \$2.50 per doz.; \$15.00 per 100.

Persicifolia (Peach-Leaf Bellflower). Glossy green foliage from which it takes its common name. Flowers are blue, shading to white. 2 feet. June. \$3.00 per doz.; \$18.00 per 100.

Persicifolia alba. White form of persicifolia. \$2.50 per doz.; \$15.00 per 100.

CERASTIUM

Biebersteini (Improved Snow-in-Summer). A low-growing plant which bears a multitude of small, white flowers. The foliage is silvery white and the entire plant makes a desirable edging or carpeting for borders and beds; it is attractive throughout the entire season. \$2.50 per doz.; \$15.00 per 100.

CENTAUREA (Perennial Cornflower)

Montana. Grows 2 feet high, bearing large, violet-blue flowers from July to September. \$2.50 per doz.; 15.00 per 100.

Montana alba. A white variety of the above. \$2.50 per doz.; 15.00 per 100.

POMPON CHRYSANTHEMUMS

These are the small-flowered Chrysanthemums of the old-fashioned gardens, and bloom in October and November, after almost all flowers are gone. They are showy in the garden and effective as cut-flowers, and being perfectly hardy and of easiest culture, can be successfully grown in any garden. We offer a fine collection of the best varieties, ranging from white to deep crimson.

We supply pot plants for May and June delivery
Price \$2.25 per doz.; \$14.00 per 100

Boston. Beautiful bronze-orange. Tall and branched.
Capt. R. H. Cook. Dark rose with brownish center.
Frank Wilcox. Golden bronze of special merit for those desiring late variety.
Golden Climax. Rich yellow. Extra fine for cutting. Free bloomer.
Indian. Copperish red.
Klondike. Brilliant yellow. Compact blooms of medium size.
Lillian Doty. Beautiful shell-pink. Strong, upright growth.

Nelle Kleris. Clear pink.
Marie Antoinette. Deep pink.
Mizzi. Yellow with reddish center.
Petite Louis. Rose-pink with bronze center.
Provence. Rose-pink, tipped rosy red.
Rose Travena. Very large; deep rose-pink.
Red Button. Reddish bronze button; hardy and free flowering.
Varsity. Yellow.
White Doty. Pure white sport from Lillian Doty. Identical in every respect except color.

HARDY LARGE FLOWERED OLD-FASHION CHRYSANTHEMUM

The blooms are 3 inches or more in diameter, shaped like an aster. Slight protection during the winter.

	Per 12	Per 100
White. Blooms sometimes slightly tinged with cream	\$2.50	\$15.00
Blush. Tinged with rose and pink tones	2.50	15.00
Pink. Shaded from blush-pink to deeper tones	2.50	15.00
Yellow. Varying from lemon to orange-yellow	2.50	15.00

DELPHINIUM

Chinense. Fine feathery foliage and intense gentian-blue flowers in open panicles. \$2.50 per doz.; \$15.00 per 100.
Chinense Album. A pure white form of the above. \$2.50 per doz.; \$15.00 per 100.

DIGITALIS—FOXGLOVE

The Shirley

The Shirley Foxglove is a magnificent new strain produced by the late Rev. W. Wilkes. It produces plants 5 to 7 feet high with spikes 4 feet long, carrying flowers of great size, ranging from white to dark rose, handsomely blotched and spotted with crimson, maroon and chocolate. It is, of course, a hardy perennial. \$2.75 per doz.; \$18.00 per 100.

Purpurea. The old-fashioned purple Foxglove. The flower spikes are from 4 to 7 feet tall, coming to perfection in July. \$2.50 per doz.; \$15.00 per 100.
Purpurea alba. White form of purpurea. \$2.50 per doz.; \$15.00 per 100.

DIANTHUS

Deltoides (Maiden Pink). Dainty border plant. Flowers deep red with crimson eye. \$2.50 per doz.; \$15.00 per 100.

DICENTRA

Eximia (Fringed Bleeding Heart). Almost a perpetual bloomer, as the flowers are produced all Summer; foliage fernlike. \$3.00 per doz.; \$20.00 per 100.

HARDY FERNS

Varieties marked (*) require shade; those marked (+) succeed in open border.

	Per 12	Per 100
* Adiantum pedatum (American Maidenhair Fern)	\$2.50	\$18.00
† Athyrium filixfemina (Lady Fern)	2.50	18.00
† Dennstaedtia punctilobula (Hay-Scented Fern)	2.50	18.00
* Dryopteris goldiana (Goldie Fern)	2.50	18.00
* marginalis (Leather Fern)	2.50	18.00
† Osmunda cinnamomea (Cinnamon Fern)	2.50	18.00
† claytoniana (Interrupted Fern)	2.50	18.00
† regalis (Royal Fern)	2.50	18.00
* Polystichum acrostichoides (Christmas Fern)	2.50	18.00
† Pteris nodulosa (Ostrich Fern)	2.50	18.00
* Woodsia obtusa (Common Woodsia)	2.50	18.00

FESTUCA GLAUCA (Blue Fescue Grass)

A dwarf grass with very distinct blue foliage. Does not grow over 8 to 10 inches high and is very effective. \$2.50 per doz.; \$15.00 per 100.

GENISTA ELATIOR (Hardy Broom)

At last we have a Genista, or Broom, that is perfectly hardy in this climate. All know the yellow-flowered Genistas that the florists sell for Easter at prices ranging from two to ten dollars each. This hardy Genista is just as beautiful as these and can be grown in anyone's garden or shrubbery. It is of slow growth, but eventually reaches a height of 3 to 4 feet and as many feet across. In June it is covered with beautiful yellow, pea-shaped flowers which continue a long time on the plant. We consider this one of the most valuable small shrubs introduced during many years. Pot-grown plants, 50 cts. each; \$5.00 per doz.

IBERIS (Candytuft)

Saxatilis corifolia. Candytuft. A large snow-white flower. 8 to 10 inches. May. \$2.50 per doz.; \$15.00 per 100.

Sempervirens. Hardy Candytuft. The flowers are white, borne with great freedom, while the foliage may remain green all winter. About 1 foot. April to June. \$2.50 per doz.; \$15.00 per 100.

Sempervirens nana. A dwarf form of the preceding. \$2.50 per doz.; \$15.00 per 100.

KNIPHOFIA—TRITOMA (Flame Flower, or Torch Lily)

This new Tritoma is undoubtedly one of the most valuable introductions of recent years. Tritoma Uvaria, or "Red-Hot-Poker" plant, is highly prized on account of its picturesque appearance and its blooming so late in the fall after almost everything else is gone. This new variety is a great improvement in every respect. The flowers are much more refined and beautiful and are produced in the greatest profusion from early summer until late fall, coming into bloom at least two months before the older variety. It is equally desirable for garden effects or for cut-flowers. The flower-spikes are of gigantic size, frequently 4½ feet high, with heads of bloom over 12 inches long, of a rich orange-scarlet, shading to salmon-rose on the edge; a first-class acquisition. This plant is not quite hardy and should be protected in winter with a covering of leaves, or can be taken up, packed in sand and stored in a cold cellar over winter. 35 cts. each; \$3.50 per dozen; \$25.00 per 100.

LOBELIA

Cardinalis (Cardinal Flower). Flowers are Indian pink. The most showy of all our native plants; no other flower compares with the brilliancy of the blooms, which are a rich cardinal-red. The blooms are rather loosely clustered at the end of the flower stems, from 2 to 4 feet long, July to September. \$2.50 per doz.; \$15.00 per 100.

LYCHNIS VISCARIA SPLENDENS FLORE PLENO (Double Rose-pink Campion)

Double Red (Ragged Robin). Forms a dense tuft of evergreen foliage, and in June it sends up tall spikes of handsome double, deep red flowers of exquisite fragrance, and remains in perfection six weeks. 25 cts. each; \$2.50 per doz.; \$15.00 per 100.

MERTENSIA VIRGINIA (Blue Bells)

An early spring-flowering plant, growing about 1 to 1½ feet high, with drooping panicles of handsome light blue flowers, fading to clear pink. One of the most interesting of our native spring flowers. May and June. 25 cts. each; \$2.50 per doz.; \$15.00 per 100.

MYOSOTIS

Scorpioides semperflorens (Dwarf Perpetual Forget-me-nots). An improved variety of the old-fashioned true Forget-me-not. The plants require a rather damp, shaded place. Flowers bright blue; borne all Summer. 8 inches. \$2.50 per doz.; \$15.00 per 100.

OENOTHERA

Fruticosa Youngi (Young's Sundrops). Extremely profuse bloomer, bright lemon-yellow flowers. Plant branching, about 2 feet high. \$2.50 per doz.; \$15.00 per 100.

Glauca Fraseri (Fraser's Sundrops). Flowers are yellow, quite large, and borne in clusters. 2 to 3 feet. Midsummer. \$2.50 per doz.; \$15.00 per 100.

PACHYSANDRA

Terminalis (Japanese Spurge). A valuable plant for covering the ground in shady places, but seems to grow well in the sun. The foliage is a bright glossy green, while the plant is rarely more than 6 inches high. Small spikes of flowers are borne during the months of May and June. \$2.50 per doz.; \$15.00 per 100.

PENTSTEMON

Torreyi (Torrey Pentstemon). An excellent variety of this American plant that is used chiefly for garden borders. The flowers which are scarlet or crimson and orange, are produced freely in June and July. \$2.50 per doz.; \$15.00 per 100.

Florist's New Giant. A fine improved race of Pentstemon of more erect habit than the older strain and with very large flowers, ranging in color from bright and rich reds to rose, violet, and white. Hardy perennial but needs protection during the Winter north of Pennsylvania. \$1.75 per doz.; \$12.00 per 100.

PENNISETUM JAPONICUM

This new Hardy Grass is very desirable. It grows 4 feet high, with slender, graceful foliage and showy plumes thrown well above the leaves. Most valuable for adding variety to the garden planting. 25 cts. each; \$2.50 per doz.

KARLSRUHE BALCONY PETUNIAS

Several years ago, while motoring in Germany, we saw the most beautiful Petunias trained on the iron railings of the balcony of the town hall of Karlsruhe. It was the most effective balcony decoration we had ever seen. There was only one color—a lovely rich violet-blue, a color never seen in Petunias before. The front of the balcony was a solid sheet of color. Inquiry developed that these remarkable Petunias were being shown by a local specialist. We were unable to obtain any seed until a few years later when we got a small quantity.

Violet Blue	Pure White
Carmine	Rosy Pink
3 inch pot plants \$1.75 per doz;	\$12.00 per 100.

PRIMULA POLYANTHUS

This charming Spring-blooming plant belongs to the Primrose family, the hardy varieties of which are so very popular in England, but are rarely seen in this country, owing partly to an impression that they cannot be grown in this climate. This is a mistake, as they do very well here. For the front of the borders and shrubbery, for Spring bedding, and for naturalizing in moist and partly shaded places nothing can be finer.

Large-Flowered White. An improved variety with very large flowers; very fine. \$2.00 per doz.; \$13.00 per 100.

Large-Flowered Mixed. \$2.00 per doz.; \$13.00 per 100.

Cashmeriana. Large-leaved variety, as hardy as it is handsome, and when planted in moist, rich loam, grows as vigorously as a cabbage. \$2.50 per doz.; \$18.00 per 100.

PHYSOSTEGIA VIRGINIANA

False Dragon. An American plant forming large clumps, which in July and August are covered with light pink flowers. \$2.25 per doz.; \$14.00 per 100.

POLEMONIUM CERULEUM

(Jacob's Ladder)

Useful border plants about 12 inches high, with deep green, finely cut foliage and spikes of showy blue flowers in May and June; of graceful growth. \$2.50 per doz.; \$15.00 per 100.

PLUMBAGO LARPENTAE

A dwarf plant covering the ground completely with its foliage. In September it is a mass of beautiful, deep blue flowers, which gradually change to violet. \$2.50 per doz.; \$15.00 per 100.

HARDY PERENNIAL PHLOXES

The beauty and usefulness of these grand border plants give to them a deservedly first place among hardy plants. For cutting, their large trusses go a long way in floral decorations. In color they range from pure white to the richest coral-red, all having a delicate fragrance. Perennial Phloxes succeed in almost any soil enriched with manure, but are much benefited by a mulching of decomposed manure in spring, and in hot weather an occasional soaking of water. If the first spikes of bloom are removed as soon as over and the plant given a good soaking of water, they will produce a second supply of flowers, thus continuing the display until late in autumn. These later blooms are often finer than the first.

Pot-grown plants, 25 cts. each; \$2.50 per doz.; \$15.00 per 100.

Albion. Pure white, with a faint red eye.

Beacon. Brilliant cherry-red. Grows 36 inches high. The flower heads are carried on straight, strong stems. It is an excellent variety and one of the best of this color.

Europa. White with crimson eye. Extra large. Distinct and fine.

Frau Buchner. One of the prettiest delicate shades of mauve with crimson eye.

Jules Sandeau. Rather dwarf in habit, but producing very large heads of brilliant watermelon-pink blossoms. An outstanding variety because its flowers more freely and longer than most Phlox.

Kossuth. Deep rose, maroon center.

La Vague. Warm mauve-pink with red eye. This Phlox does not look nor create the effect that the so-called wild or purple Phlox does. The flower heads are conical and large, and borne in great profusion.

Miss Lingard. Early-flowering; pure white blooms with a faint lilac eye. Splendid for mass planting, as it will bloom in June and again in September, if the old flowers are cut. Not infested with red spider.

Mrs. Scholten. New dark salmon-pink flowers in enormous pyramidal spikes. A splendid sort of great value. Mid-season flowering and of medium height.

Richard Wallace. White with crimson eye. Splendid.

Rynstrom. Rose-pink; flowers and trusses extremely large; possibly the finest Phlox of this color.

Rhineland. Salmon-pink; both flower and truss are immense in size, and the color is intensified by a brilliant carmine eye.

Thor (Medium). A most beautiful and lively shade of deep salmon-pink suffused and overlaid with a scarlet glow.

ROSMARINUS

Officinalis (Rosemary). A shrubby perennial from 2 to 4 feet high, with many small light blue flowers. Familiar in old-fashioned gardens. \$2.50 per doz.; \$15.00 per 100.

SALVIA (Scarlet Sage)

Improved Dwarf. Spikes of brilliant scarlet flowers. \$1.50 per doz.; \$10.00 per 100.

Splendens. The old-fashioned, tall-growing variety. \$1.50 per doz.; \$10.00 per 100.

SEDUM—STONECROP

A showy group of hardy perennials which anyone can grow and which we have divided into two classes:

THE CREEPING STONECROPS

Are seldom over 6 inches high; excellent for edging perennial beds and carpeting the ground between shrubs.

Sieboldi (Siebold Stonecrop). This Japanese variety, with its exquisite glaucous leaves, is considered the best foliage plant in the Sedum family. Flowers rosy pink. \$3.50 per doz.; \$25.00 per 100.

Spectabile (Showy Stonecrop). Glaucous foliage; flat clusters, about 4 inches across, of rose or light purple flowers. 1 to 3 feet, September and October. \$2.50 per doz.; \$15.00 per 100.

Stoloniferum (Running Stonecrop). Pink flowers in June and July. \$2.00 per doz.; \$12.00 per 100.

THE MOSSY STONECROPS

Acre (Gold Moss). Grows 2 to 3 inches high; yellow flowers in July; leaves are ¼ inch long. \$2.00 per doz.; \$12.00 per 100.

Album (White Stonecrop). Small white flowers. \$2.00 per doz.; \$12.00 per 100.

Reflexum (Jenny Stonecrop). Small, bright yellow flowers making up a flat cluster 1 to 1½ inches across. July. \$2.00 per doz.; \$12.00 per 100.

SILENE

Schafta (Schafta Catchfly). A low-growing plant with rose-pink flowers in clusters. Useful for edging and the rock garden. June to September. \$2.50 per doz.; \$15.00 per 100.

STENANTHIUM ROBUSTUM (Mountain Feather Fleece)

This remarkably hardy perennial is without doubt one of our best new introductions and may be classed with the showiest of all herbaceous plants. As the buds begin to unfold, they are quite upright, and of a light green tinge, gradually becoming whiter until at last they burst forth into a veritable snowbank of drooping, fleecy bloom of the purest white, the panicles often 2 to 3 feet long. After several weeks the flowers, as they ripen, turn to shades of pink and purple. It is a vigorous perennial, attaining a height of 5 to 8 feet, and is absolutely hardy throughout the United States and Canada.

The Mountain Feather Fleece is of easy cultivation, but takes some time to become well established and if given plenty of food, makes a wonderful show equalled by few plants of any description. Prefers a moist and partially shaded position. It would be impossible to give an idea of the wonderful effect of a large mass of *Stenanthiums* when in full bloom, as no description conveys the beauty of the delicate feathered, drooping flowers. Strong plants, 35 cts. each; \$3.50 per doz.

STOKESIA CYANEA

(Cornflower Aster, or Stokes' Aster)

Cerulea. Beautiful light blue. \$2.50 per doz.; \$15.00 per 100.

Alba. Pure white variety of the above. \$2.50 per doz.; \$15.00 per 100.

THALICTRUM

Aquilegifolium (Columbine Meadow Rue). One of the most desirable hardy plants in cultivation. Its fine habit, beautiful foliage, and masses of lovely flowers, varying from white to purple through all intermediate shades, make it one of the most handsome things that can be planted. A graceful plant of much charm and distinction. 2 to 3 feet high; blooms in May and June. \$2.50 per doz.; \$15.00 per 100.

TROLLIUS—GLOBE FLOWER

A family of plants which succeeds well in borders where they may be shaded during the middle of the day. They prefer a light soil and a goodly amount of moisture.

Japonicus (Japanese Globe Flower). Orange-yellow flowers, borne freely in early spring. 40 cts. each; \$4.00 per doz.

Mixed. All colors. 30 cts. each; \$3.00 per doz.

HYBRID TEA ROSES EVERBLOOMING

*Prices except where noted, for strong, 2-year field-grown plants in pots
\$1.00 each; \$10.00 per doz.*

Columbia. One of the largest Roses among the recent introductions, flowers occasionally measuring 6 inches across. The color is a splendid pink, which becomes more intense as the blooms grow older. The flowers are borne on long stems that are usually thornless 10 inches below the flower.

Duchess of Wellington. Unquestionably the best yellow Rose. Intense saffron-yellow stained rich crimson. Vigorous in growth, erect and free flowering.

Gruss an Teplitz. The crimson-scarlet blooms are produced in great profusion from early June until the time of killing frosts. An excellent variety for mass plantings and for Rose hedges.

Hadley. Deep velvety crimson, which retains its color. Both buds and flowers are beautifully formed.

Jonkheer J. L. Mock. Practically a double colored bloom, because of the bright cherry-red on the outside of the petals and the shiny, silvery white on the inside. Unusually large and well formed.

Kaiserin Auguste Victoria. An old sort which possesses so many perfections that it is still one of the most popular varieties. The creamy white blooms are quite large and full, and are produced in great numbers until late Autumn.

Killarney. The long, pointed buds are an exquisite pink, and are borne in great numbers. This is a favorite for cut flowers and is still one of the most popular varieties, although it has been known for more than twenty years. Delicious perfume.

Killarney White. Pure white. Sport from Killarney. Long and of fine form.

Los Angeles (Howard & Smith). One of the finest Roses ever introduced. The growth is vigorous and produces a long-stemmed flower of a luminous flame-pink toned with coral and shaded with translucent gold at base of the petals. The buds are long and pointed. \$1.25 each; \$12.50 per doz.

Miss Lolita Armour (Howard & Smith). In 1921 it won the Bagatelle (Paris) prize. Its fragrant blooms develop from well shaped buds, chrome-yellow at base, shading to orange and copper hues on the reverse of the petals, and with much of the copper and shrimp-pink tints in its make-up. Free blooming.

Mme. Butterfly. Bright pink, apricot and gold. Plant is strong, throwing up big branching sprays of bloom.

Mme. Caroline Testout. Broad petals of bright satiny rose, slightly darker at the center and carmine-pink at the edges. Bushes are quite vigorous and produce great numbers of blooms.

Mme. Edouard Herriot. Buds coral-red, opening to medium sized blooms of coral-red, shaded with yellow and bright rose-scarlet, which still later changes to shrimp-red. Winner of the Gold Cup offered by the London Daily Mail for the best new Rose at the International Exhibition in London. (See color illustration.)

Mrs. Aaron Ward. Long, shapely buds of Indian yellow, occasionally flushed with salmon-rose. Flowers freely all through the season.

Ophelia. Light salmon-pink blooms which shade to yellow at the bases of the petals. Considered the best Rose of its color, as the blooms are large in size and very attractively formed. Blooms freely throughout the season and far into the Autumn.

Radiance. The strong plants produce hosts of handsome flowers, which range in color from light silvery flesh to salmon-pink, suffused with pink and yellowish coppery red.

Red Letter Day (A. Dickson & Sons). An exceedingly beautiful Rose of infinite grace and charm. Its velvety, brilliant scarlet-crimson buds and fully opened flowers never fade.

Red Radiance. The color is a splendid, even shade of clear red, without a trace of any other color, retaining its vividness for an unusually long time. Strong and vigorous.

Souvenir de Claudius Pernet (Pernet-Ducher, 1920). (Awarded the Bagatelle prize.) Its color is a definite and lovely sunflower-yellow, deepening in the center, and it retains this color indoors and outdoors, in bud and full bloom. The plants are of branching habit, with brilliant green foliage and few thorns and the buds are produced on long, stiff stems. \$1.25 each; \$12.50 per doz.

Sunburst. Large, golden yellow flowers, with orange-yellow centers, borne on strong, upright stems; excellent for cutting.

Willowmere. The buds are a combination of carmine-coral and red, but open to a rich shrimp-pink, shaded with yellow in the center and toning to carmine-pink at the edges of the petals.

ELLIOTT NURSERY COMPANY

336 MAGEE BUILDING
PITTSBURGH, PA.

A BREATH OF FLORIDA FOR YOUR HOME

Take Advantage of the Fact That the Temperature of Your Own Living Room in Winter Is the Same as the Famous Climate in the "Land of Flowers."

COUNTLESS thousands will jam the trains and roads to Florida this Winter, seeking the well-advertised balmy air of that Southern resort. Yet, while they are on their way, you and your family will be whiling away part of your time in a living room of the very same temperature that has made Florida famous!

In other words, you have a breath of Florida in your own home. And the natural thing to do is to turn it into a fragrant, flower-laden atmosphere that will give you, at a ridiculously low cost, some of the pleasure and happiness that others get only by going South!

IT IS THE EASIEST THING IN THE WORLD

This doesn't mean that you have to be an experienced gardener or a trained horticulturist. Even if you don't know a Tulip from a Hyacinth, you can grow them easily and successfully by merely following the simple directions that accompany the bulbs. The fact that the bulbs are perfect to begin with virtually insures your success, for once they've been started most of them seem to grow whether you want them to or not!

A SPECIAL OFFERING THIS SEASON

This is particularly true of this season's special offering, the Prepared Dutch Hyacinth. After three years of careful tests and observations with this type of bulb, we are now prepared to offer it in quantities backed by our usual guarantee. Having been specially treated by a new method, this bulb grows unusually fast and with remarkable success, thus recommending itself most highly to those who want flowers in their home at a minimum cost and with no especial effort.

THIS PLEASURE IS YOURS FOR THE ASKING

This being true, it would be a shame not to bring Florida to your living room this Winter. For Flowers are beautiful living things, the symbol of the best Life has to offer us.

"If thou wouldst attain thy highest," advised Schiller, "go look upon a flower." And when the cost is of such little consequence and the effort involved, there is none who can afford to be without the inspiring sweetness of Mother Nature's own jewels.

We recommend the offerings on the following pages as the greatest asset to the bed-rock of civilization, The Happy Home!





New Prepared Dutch Hyacinths

New Prepared Dutch Hyacinths

THE perfection of the new heat-treated Dutch Hyacinth is really a response to the growing demand for a "sure-fire, fool-proof" plant. The mechanical process to which the bulb is subjected shortens its growing time considerably and gives an unusually beautiful flower. They require no attention, are inexpensive and most satisfactory, and exhaustive experiments with them over a period of several years demonstrate that they are well worth your special consideration.

It is next to impossible to fail with the Prepared Dutch Hyacinths for January bloom and with very good care they can be forced into bloom by Christmas. They can be planted as soon as they are received or delayed until after the first of the year, if desired, without affecting the quality of the flower in the least.

These Bulbs Are Picked by Experts

The Elliott Nurseries back the Prepared Dutch Hyacinths with the usual guarantee and recommend the bulb emphatically.

In order to prevent confusion in filling orders we have renamed these specially prepared Hyacinths.

	Dozen	100
Christmas Red (La Victoire) ..	\$2.25	\$15.00
Heavenly Blue (Schotel)	2.25	15.00
Golden Climax (Yellow Hammer)	2.25	15.00
Purity (L'Innocence), White ..	2.25	15.00
Rosy Morn (Lady Derby), Pink ..	2.25	15.00
Royal Prince (Dr. Lieber), Purple ..	2.25	15.00
Vesta (Beauty), Pink	2.25	15.00

Forcing or "House Bulbs"

THOSE who are interested chiefly in forcing bulbs for house use can pick any of the First or Second Sized named Hyacinths, the Miniature Hyacinths, the Special Prepared Hyacinths; either Single or Double Early Tulips. But if you don't care to go to the trouble of looking through the entire catalog for suitable bulbs, you can rest assured that any of the groups listed on this page, plus the Lilies on Page 6, will give you the utmost satisfaction.

HYACINTHS

First or Exhibition Size
(To bloom in February)

	Each	Dozen	100
Buff Beauty, Orange Yellow	\$.30	\$3.25	\$25.00
Gertrude, Carmine Rose50	3.25	25.00
Gen. Vetter, Blush White50	3.25	25.00
Grand Maitre, Porcelain Blue50	3.25	25.00
King of the Blues, Dark Blue50	3.25	25.00
Lady Derby, Rose Pink50	3.25	25.00
La Victoire, Carmine Red50	3.25	25.00
L'Innocence, White50	3.25	25.00
La Grandesse, White50	3.25	25.00
Mansfield, Ruby Violet50	3.25	25.00
Queen of the Blues, Sky Blue50	3.25	25.00
Yellow Hammer, Cream Yellow50	3.25	25.00

TULIPS Single Early

(To bloom in February)

	Dozen	100
Couleur Cardinal, Deep Scarlet	\$.90	\$6.50
General de Wet, Orange	Each .20	2.25
Keizerskroon, Red and Yellow	1.10	7.50
La Reine Maximus, Blush White70	5.00
Mon Tresor, Pure Yellow	1.00	7.00
Proserpine, Carmine Rose90	6.50

Double Early

(To bloom in March)

	Dozen	100
Crown of Gold, Yellow	\$.85	\$6.00
Imperator Rubrorum, Deep Scarlet90	6.50
Murillo, Pink65	4.50
Peach Blossom, Rosy Pink90	6.50
Schoonoord, Pure White75	5.50
Tea Rose, Apricot Yellow60	4.00

Laconia, N. H.

Elliott Nursery Company,
Pittsburgh, Pa.

Gentlemen:

Enclosed please find check.

I want to say that it is a joy to open a box of such splendid bulbs as those which you put out. Thank you, too, for the cultural instructions. They were greatly appreciated by the three friends whose orders were included with mine.

Yours respectfully,
(signed) MRS. J. S. AVERY

For "Blue Ribbon" Results

IF you want a collection of flowers that no one in your community will be able to rival, Elliott's Late Tulips for forcing will give you all of that provided you cultivate them with the proper care. However, this requires something more than a beginner's knowledge, and unless you have had experience, we advise against trying to force late Tulips. If you are certain that you can do it, Darwin and Breeder Tulips are the best to use. They are gorgeous when forced and the results justify whatever effort it costs. The following varieties are the only ones that should be used—and the directions which accompany them must be followed to the letter.

BREEDER TULIPS (To bloom in March)

	Dozen	100
Bronze Queen. Soft buff.....	\$.60	\$4.25
Bacchus. Darkest blue.....	1.65	11.00
Coridion. Yellow.....	1.75	12.00
Don Pedro. Coffee brown.....	1.50	10.00
Panorama. Orange red.....	.75	5.50

DARWIN TULIPS (To bloom in March)

	Dozen	100
Bartigon. Fiery crimson.....	\$.50	\$3.50
Centenaire. Violet-rose.....	.60	4.00
Philippe de Commines. Dark violet.....	.60	4.00
Princess Elizabeth. Deepest pink.....	.60	4.00
William Copland. Lavender.....	.60	4.25
William Pitt. Rich crimson.....	.60	4.00



Forced Murillo Tulips

Hand-Picked Assortments

KNOWING that many buyers of bulbs do not care enough about technical descriptions to wade through them, we have prepared four standard assortments for their convenience. Only the very best varieties are included in these collections and they are backed by our usual guarantee. In ordering you need only specify the assortment initial, understanding that in the higher priced collections a greater proportion of the more expensive bulbs are included. If you desire to go above the \$10.00 group, you can either specify the amount and the varieties—or leave the choice to our own good judgment, as you please.

Collection J. 35 Assorted bulbs of suitable varieties.....	\$2.75
Collection K. 60 Assorted bulbs of suitable varieties.....	5.00
Collection L. 110 Assorted bulbs of suitable varieties.....	10.00

5% Discount For Cash Before July 1st 1928



Lilly-of-the-Valley Berlin



Freesia Purity

Catonsville, Md.

Elliott Nursery Company,
Pittsburgh, Pa.

Gentlemen:

I am enclosing a photograph of my pot of a dozen Purity Freesias taken two weeks ago. They were potted about the third week in October and began to open about January 25.

I bought my first bulbs of you 26 years ago. May all your customers get as much pleasure from them as my daughter and I do from ours.

With best wishes,

Very sincerely yours,
(Signed) ALICE M. BAER

LILIUM FORMOSUM

Each Doz. 100

Formosum. Japanese Easter Lily. Excellent for forcing or planting outdoors. Large, white, trumpet-shaped blooms.

7 to 9 inches.....	\$.25	\$2.50	\$16.00
9 to 10 inches.....	.30	3.25	23.00

LILIUM HARRISII

(True Bermuda Easter Lily)

These Lilies are suitable for growing in greenhouse only.

Bulbs 5 to 7 inches in circumference.....	\$.15	\$1.75	\$12.00
Bulbs 6 to 7 inches in circumference.....	.20	2.25	15.00
Bulbs 7 to 9 inches in circumference.....	.30	3.25	25.00

LILY-OF-THE-VALLEY

Extra selected Berlin Pips. Ready in December. For forcing (American pips will not force)

	Per 25	Per 100
	1.75	6.50

CALLA LILIES

White Calla (Richardia Aethiopica). The White Calla, or Lily of the Nile, is a well known plant of easy culture, and in Winter is one of our best window plants. To aid profuse blooming keep them dormant from the middle of June until the last of August; repot in good, rich soil, using 6 to 8 inch pot; give water, light and heat in abundance, and the result will be most satisfactory.

	Each	Doz.	100
Selected bulbs.....	\$.25	\$2.50	\$15.00
Mammoth bulbs.....	.30	3.25	24.00

FREESIA PURITY

This charming flower is one of the most satisfactory bulbs that can be forced. It is certain to flower either in the conservatory or the house.

	Doz.	100	1,000
Selected bulbs 1/2 to 5/8 in.....	\$.30	\$2.10	\$17.50
Mammoth bulbs. Extra 5/8 to 3/4 in...	.50	3.75	32.00

NAMED FREESIAS IN SEPARATE COLORS

	Doz.	100
Buttercup, Splendid Yellow.....	\$.75	\$5.50
California, Very Best Yellow.....	1.20	8.00
New Giant, Very Finest Lavender.....	1.10	7.50
Splendens, Beautiful Lavender.....	.75	5.50

RAINBOW, Fardel's Strain. A wonderfully improved stock of colored Freesia, comprising a large number of beautiful shades of yellow, blue, mauve, pink, lavender, etc. The flowers are as large as the best white type, and equally as fragrant. We offer them in mixed colors only.

Dozen	\$0.70
100.....	\$5.00
1000.....	\$45.00

SPRING'S FIRST FLOWER— THE CROCUS

Those who "Can Hardly Wait
For Spring to Come" Should
Plant Crocuses

DON'T you grow impatient for Spring before the last snow has gone? Well, if you want to see your garden come into bloom at the earliest possible moment, plant it with Crocuses—they absolutely defy the lingering Winter.

Frequently they bloom while the snow is still on the ground. And when all is said and done, none of the gorgeous Summer flowers are more welcome than this first messenger of Spring.

The Crocus has a universal appeal. It is the most logical flower for a small patch of ground—all that many houses can afford to give to flowers. On the other hand, it is ideal for growing in the grass of the lawn for long strips of borders, either around other beds, beside paths, or in front of a porch or a garage entrance. They bloom year after year if you don't cut off the foliage.

In short, Crocuses cost little, expect little but give a great deal.



CROCUSES

Fine Named Varieties

	Doz.	100
Albion. Striped white and blue.....	\$.50	\$3.00
Argus. Variegated.....	.50	3.00
Baron Von Brunow. Dark blue.....	.50	3.00
Caroline Chisholm. Pure white.....	.50	3.00
Cloth of Silver. White; violet striped.....	.50	3.00
Grand Lilac Lilac; very early and very fine.....	.50	3.00
Grootvorst. White and violet.....	.50	3.00
Harbinger of Spring. Brilliant dark purple, very early.....	.50	3.00
Kathleen Parlow. Pure white; extra large flower.....	.60	4.00
King of the Blues. Dark purple.....	.50	3.00
King of the Whites. Large; snow-white; splendid new variety.....	.60	4.00
Lady Stanhope. White and violet.....	.50	3.00
La Majesteuse. Striped.....	.50	3.00
Livingstone. Lilac and white.....	.50	3.00
Mont Blanc. White; best.....	.60	4.00
Mad. Mina. Light blue, striped; very early; extra fine.....	.50	3.00
Othello. Dark purple.....	.50	3.00
Pallas. White, striped light blue.....	.60	4.00
No Plus Ultra. Blue, white border.....	.50	3.00
Prince Albert. Blue.....	.50	3.00
Purpurea Grandiflora. Deep purple.....	.60	4.00
Queen Victoria. White.....	.50	3.00

Border of Mixed Crocuses

	Doz.	100
Scotch. White, striped; very early.....	\$.50	\$3.00
Sir Walter Scott. Striped; finest.....	.50	3.00
Sir John Franklin. Large; dark purple.....	.50	3.00
Xerxes. Lilac, extra large.....	.50	3.00
All colors mixed.....20.00 per 1000.....	.30	2.25

YELLOW CROCUS

Large Yellow. Second size usually sold as Mammoth).....	\$.40	3.00
Large Yellow. Mammoth bulbs, first size.....	.55	4.00
Large Yellow. Monster bulbs.....	.65	4.50

CROCUSES IN SEPARATE COLORS

Last year we supplied our customers with nearly a quarter of a million crocus in separate colors and mixtures.

	Doz.	100	1000
Blue.....	\$.35	\$2.50	\$22.50
Striped.....	.35	2.50	22.50
White.....	.35	2.50	22.50
All Colors Mixed.....	.30	2.25	20.00

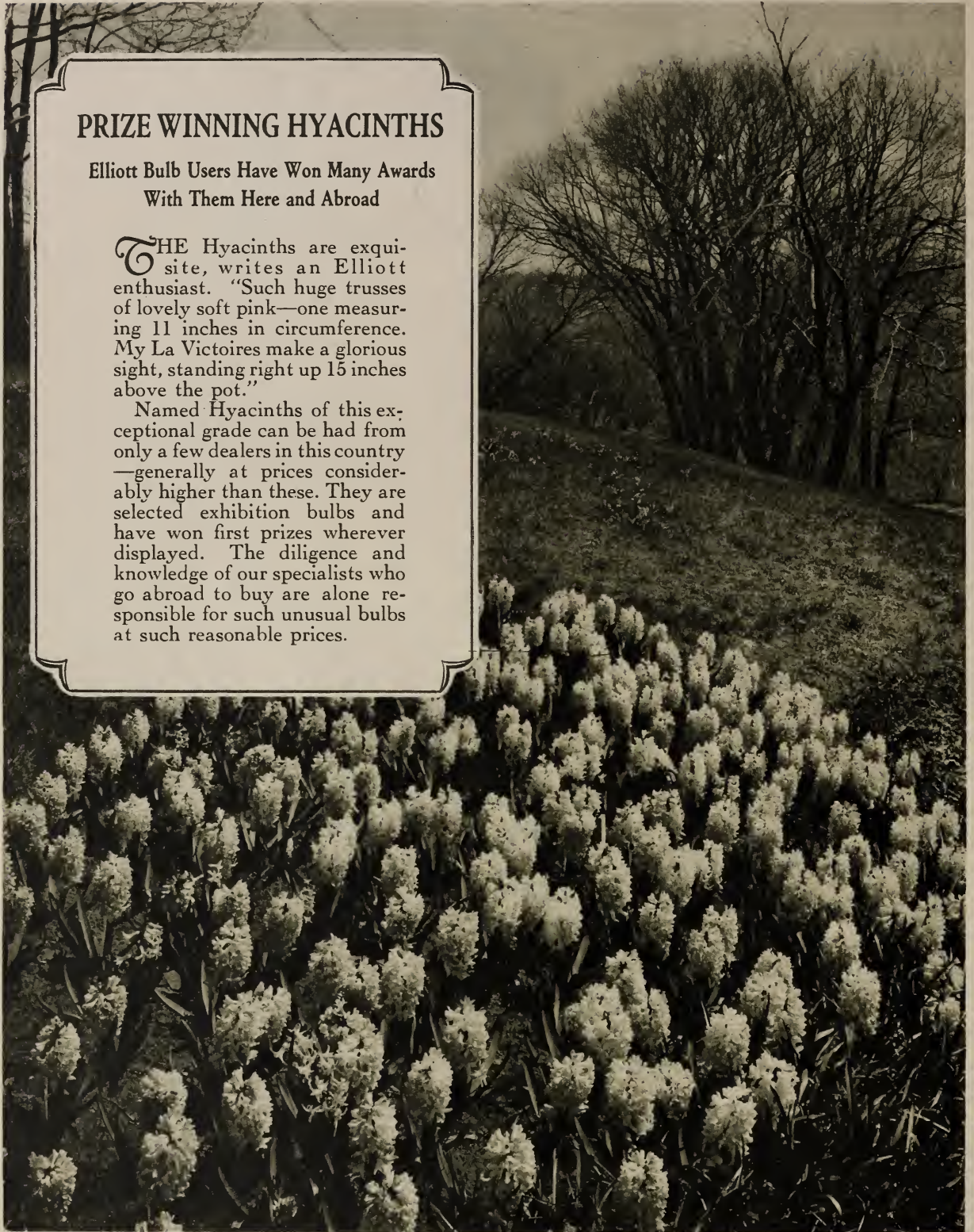
Use Crocuses For Your Borders and Lawns

PRIZE WINNING HYACINTHS

Elliott Bulb Users Have Won Many Awards
With Them Here and Abroad

THE Hyacinths are exquisite, writes an Elliott enthusiast. "Such huge trusses of lovely soft pink—one measuring 11 inches in circumference. My La Victoires make a glorious sight, standing right up 15 inches above the pot."

Named Hyacinths of this exceptional grade can be had from only a few dealers in this country—generally at prices considerably higher than these. They are selected exhibition bulbs and have won first prizes wherever displayed. The diligence and knowledge of our specialists who go abroad to buy are alone responsible for such unusual bulbs at such reasonable prices.



Quality Hyacinths Usually Cost More Than These

First Size Named Hyacinths

"Top Root, Exhibition Mother Bulbs"

CUSTOMERS from every quarter of the land write us that they have never seen such gorgeous flowers as Elliott's First Size Named Hyacinths. It is safe to say that they are the finest and largest blooms to be had at any price.

The success of the bulbs and the natural beauty of their flowers have made many a "week-end gardener" feel like a champion horticulturist and has turned many a mere flower bed into "the talk of the town."

SINGLE DARK RED

	Each	Doz.	100
Garibaldi. Brilliant red; fine for early forcing.....	\$.50	\$5.25	\$25.00
General Pelissier. Deep scarlet; early; extra fine.....	.30	3.25	25.00
La Victoire. Brilliant carmine-red; one of the very finest red varieties for bedding and forcing. It retains its superb color to the end.....	.30	3.25	25.00
Lord Macauley. Very fine, bright red. Very rough bulbs.....	.30	3.25	25.00
Roi des Belges. Extra fine; bright scarlet; extra large spike.....	.30	3.25	25.00
William the First. Brilliant carmine....	.30	3.25	25.00

SINGLE ROSE

Baron Van Thuyll. Very fine pink; extra large spike.....	.50	3.25	25.00
Beauty. Tender, lovely pink, rather small flower, but color unsurpassed....	.30	3.25	25.00
Cardinal Wiseman. Soft rose, carmine-striped; very large truss.....	.50	3.25	25.00
GENERAL DE WET. (Pink Sport of Grand Maitre). Lovely soft pink; very large truss well filled with fine bells. A splendid variety for forcing and bedding.....	.50	3.25	25.00
Gertrude. Deep carmine rose. A very large well-filled truss of a fine color. Excellent for forcing and bedding.....	.30	3.25	25.00
Gigantea. Blush; splendid truss.....	.30	3.25	25.00
Jacques. Broad, loose spike, extra long; blush.....	.30	3.25	25.00
Kohinoor. Extra large truss; bright pink; one of the largest flowers; semi-double.....	.30	3.25	25.00
Lady Derby. Beautiful pure rose-pink. Extra large truss filled with large bells. A very fine variety for bedding as it has			

	Each	Doz.	100
a strong stem to support the heavy truss. A good forcer.....	\$.30	\$5.25	\$25.00
Marconi. Deep rose flushed white. Compact spike of fine shape on a very stout stem. Excellent for out of doors.....	.50	3.25	25.00
Marie Cornelia. Light pink; earliest of all.....	.30	3.25	25.00

(Continued on Page 10)



Hyacinth La Victoire

Cockrum, Miss.

Elliott Nursery Company
Pittsburgh, Pa.
Gentlemen:

Enclosed find check in your favor.
The bulbs I bought from you have produced the most gorgeous flowers ever seen. My wife intends to give you a large order this spring.

Thanking you for your service, and the wonderful flowers you sent, I am

Yours truly,
(Signed) IVY McKINNEE

Elliott Hyacinths Have Won Many Prizes



Hyacinth La Grandesse

(Continued from Page 9)

	Each	Doz.	100
Moreno. Fine pink; extra large spike; very early; splendid sort.30	\$3.25	\$25.00
Norma. Satiny pink.30	3.25	25.00
Ornament Rose. Fine pink; large truss.30	3.25	25.00
QUEEN OF THE PINKS. (A Sport of King of the Blues). Clear rose pink. Large well-filled truss of excellent color and substance. One of the bedding varieties.30	3.25	25.00
Queen Wilhelmina. Vivid rosy-pink. Extra large truss with well shaped bells. An elegant variety.30	3.25	25.00
Rosea Maxima. Lovely delicate rose. Splendid spike. A fine variety for all purposes.30	3.25	25.00

SINGLE DARK BLUE

KING OF THE BLUES. Finest dark blue; truss and bells of fine form and excellent color. The best dark blue of the Hyacinths.30	3.25	25.00
Leopold II. Fine blue; large truss; splendid flower.30	3.25	25.00
Marie. Rich purple and indigo; enormous spike.30	3.25	25.00
Menelik. New. Almost black; best of its color; large truss.30	3.25	25.00
Nigger Boy. Very dark.30	3.25	25.00

SINGLE LIGHT BLUE

	Each	Doz.	100
Captain Boynton. Azure-blue; large spike.30	\$3.25	\$25.00
Czar Peter. Porcelain-lilac.30	3.25	25.00
Electra. Light silvery blue; splendid for forcing.30	3.25	25.00
Enchantress. Clear light blue; one of the finest of its color; extra fine spike. Exhibition variety.30	3.25	25.00
Grand Lilas. Azure-blue; perfect spike.30	3.25	25.00
GRAND MAITRE. Beautiful porcelain-blue; gigantic truss filled with fine bells. Extra strong stem. One of the finest of the lighter blue Hyacinths for all purposes.30	3.25	25.00
La Peyrouse. Clear blue.30	3.25	25.00
Lord Derby. One of the very finest.30	3.25	25.00
QUEEN OF THE BLUES. Lovely sky-blue with silvery reflex. One of the very finest of all the light blue Hyacinths. A gem for bedding and pot culture.30	3.25	25.00
Perle Brilliante. Light blue. Very large spike; fine.30	3.25	25.00
Regulus. Light blue with dark stripes.30	3.25	25.00
Schotel. Light blue; perfect truss.30	3.25	25.00

SINGLE WHITE

Albertine. Pure white; early; large spike; extra fine.30	3.25	25.00
Arentine Arendsen. New. Pure white. Very early; very attractive.30	3.25	25.00
Baroness van Thuyll. Early; pure white.30	3.25	25.00
British Queen. New. Pure white; extra fine.30	3.25	25.00
Correggio. Purest white. A magnificent truss filled with large bells of excellent substance. One of the finest exhibition varieties.30	3.25	25.00
Hein Roozen. Magnificent. Snowy-white truss. Extra long; loosely formed and very elegant. A grand variety.30	3.25	25.00
LA GRANDESSE. Purest white; extra fine; best of all whites.30	3.25	25.00
L'Innocence. Pure white. Extra fine truss with very large bells. A wonderful variety for forcing.30	3.25	25.00
Mad. Van der Hoop. Pure white; splendid.30	3.25	25.00
Paix de l'Europe. Very fine snow white; very large truss.30	3.25	25.00
QUEEN OF WHITES. Huge pure white truss. A fine exhibition variety.30	3.25	25.00
White Lady. Pure white, broad spike, very fine.30	3.25	25.00

BLUSH WHITE

GEN. VETTER. Blush white, loose spike; one of the very best.30	3.25	25.00
Grande Blanche. Lovely blush-white. Excellent spike and bells.30	3.25	25.00
Grandeur a Merveille. Rosy blush. A very dainty color and one of the most beautiful varieties.30	3.25	25.00
Leviathan. Beautiful blush; large, well-filled spikes; a most distinct and charming variety.30	3.25	25.00
Mr. Plimsol. Ivory-white; large spike.30	3.25	25.00

(Continued on Page 11)



Hyacinth Forced Dutch

(Continued from Page 10)

SINGLE YELLOW

	Each	Doz.	100
Buff Beauty. Buff or orange-yellow; large truss.....	\$.50	\$3.25	\$25.00
CITY OF HAARLEM. Soft yellow, large truss, well filled with bells. The best of the yellow Hyacinths.....	.30	3.25	25.00
Daylight. Orange-yellow; best variety of its color.....	.30	3.25	25.00
Ida. Citron-yellow; large spike.....	.30	3.25	25.00
King of Holland. Orange-yellow.....	.30	3.25	25.00
King of the Yellows. Fine, bright yellow; grand spike.....	.30	3.25	25.00
Yellow Hammer. Compact spike of a lovely creamy-yellow. Excellent for pot culture.....	.30	3.25	25.00

SINGLE VIOLET AND LILAC

Charles Dickens. Large; dark lilac; splendid.....	.30	3.25	25.00
L'Esperance. Dark purple; best of the purples.....	.30	3.25	25.00
Lord Mayo. Rich purple blue with white eye.....	.30	3.25	25.00

	Each	Doz.	100
Lord Balfour. Lilac, tinged deep violet with a rosy reflex. A very fine truss with large bells and of a very distinct color. The best variety of this class...	\$.30	\$3.25	\$25.00
Mansfield. Ruby-violet; splendid truss best of its color.....	.30	3.25	25.00
WILLETTE. Soft, pearly lavender. An unusual color and of exquisite beauty. Truss very large, on a stout stem. One of the finest of the newer varieties....	.30	3.25	25.00

Portland, Me.

Elliott Nursery Company
Pittsburgh, Pa.

Gentlemen:

I want to tell you that every early forcing hyacinth you sent me last October has made a splendid showing in our sunny Parlor window. This morning I have a dozen white, blue and pink Hyacinths which are the admiration and the envy of the passers-by.

(Signed) DR. JAMES A. SPALDING

Keep a Copy of Your Order

Second Size Named Hyacinths

THE second size Hyacinths will be found fine for forcing and are highly recommended for those who desire extra good bulbs for bedding. They embrace the leading named sorts of the preceding list, are larger bulbs than those sold as mixed, and strictly true to name and color, thus giving exact shades wanted. We can offer them in the following varieties, all of which are described in the general list.

Red

	Each	Doz.	100
La Victoire.....	\$.25	\$2.75	\$20.00
Roi des Belges.....	.25	2.75	20.00

Light Blue

Grand Maitre.....	.25	2.75	20.00
Perle Brillante.....	.25	2.75	20.00
Queen of the Blues.....	.25	2.75	20.00

Dark Blue

King of Blues.....	.25	2.75	20.00
Marie.....	.25	2.75	20.00

White

La Grandesse.....	.25	2.75	20.00
L'Innocence.....	.25	2.75	20.00
Baroness van Thuyll.....	.25	2.75	20.00



Single Small Hyacinths

Forcing Hyacinths Grow Easily

Blush White

	Each	Doz.	100
Gen. Vetter.....	.25	2.75	20.00
Grande Blanche.....	.25	2.75	20.00

Yellow

City of Haarlem.....	.25	2.75	20.00
Daylight.....	.25	2.75	20.00
Yellow Hammer.....	.25	2.75	20.00

Pink

Gigantea.....	.25	2.75	20.00
Rosea Maxima.....	.25	2.75	20.00
Queen of the Pinks.....	.25	2.75	20.00

SINGLE MIXED HYACINTHS

A Real "Buy"

For those who want a real flower at little cost, Elliott's Single Mixed Hyacinths are impossible to beat. Considering their price, these are really unusual bulbs, and while they should never be forced, you will find it pretty hard to stop their growth if you plant them outside. We anticipate a heavy demand for this bulb this season.

	Each	Doz.	100
Red and dark red.....	\$.20	\$2.00	\$14.00
Blush-white.....	.20	2.00	14.00
Pink.....	.20	2.00	14.00
Pure white.....	.20	2.00	14.00
Dark blue and purple.....	.20	2.00	14.00
Light blue.....	.20	2.00	14.00
Yellow.....	.20	2.00	14.00
All Colors, Mixed.....		2.00	14.00

MINIATURE HYACINTHS FOR FORCING

Long experience has convinced most garden lovers that Roman Hyacinths are much too high priced for their mediocre quality. Instead experienced planters are using the Single Small Forcing Hyacinth with results that are highly gratifying. Costing less than half the price of Roman, they give a flower of about the same size with larger bells and a great deal more strength. We are offering in this section only those varieties which produce the finest flowers and force easily, blooming early in January. This bulb was one of our best sellers last year.

	Doz.	100
Dark red.....	\$1.25	\$ 9.50
Pink.....	1.25	9.50
Pure white.....	1.25	9.50
Cream white.....	1.25	9.50
Dark blue.....	1.25	9.50
Light blue.....	1.25	9.50
All Colors, Mixed.....	1.25	9.50

SINGLE BEDDING HYACINTHS

Uniformity in color and height, which is so important to many spots in a garden, is one outstanding feature of the Single Bedding Hyacinths, and those who prefer a better quality bulb than the Mixed group will appreciate these at a slightly higher price. The following list covers separate varieties without names.

	Each	Doz.	100
Dark red.....	\$.22	\$2.25	\$16.00
Pink.....	.22	2.25	16.00
Pure white.....	.22	2.25	16.00
Blush-white.....	.22	2.25	16.00
Dark blue.....	.22	2.25	16.00
Light blue.....	.22	2.25	16.00
Yellow.....	.22	2.25	16.00



Seven Hardy Bulbs for Naturalizing

For the Week-End Gardener Who Wants Something Cheap But Everlasting

A GOOD many flower lovers have no time to spend cultivating their gardens. They want something that they can "plant and forget about," and the offerings on this page have been assembled especially for them. No Elliott bulbs require any skill or experience to grow—and even the forcing bulbs require very little attention—but this list of naturalizing bulbs need only to be stuck into the ground to get results.

The offering includes seven distinct types of early blooming flowers that are especially good for borders, for the edges of planting, under trees, etc. They are inexpensive and if you refrain from cutting off the top foliage, they are practically everlasting. These bulbs will give you a great deal for a long time!

MISCELLANEOUS BULBS

CHIONODOXA (Glory of the Snow). Used largely for naturalizing. Very pretty blooms early in April.		
Gigantea	Per Doz.	100
Lucillea (\$30.00 per 1000).....	\$.65	\$ 4.50
FRITILLARIA (Crown Imperials) Fine mixed varieties, including double and single flowering sorts. Colors range from light yellow through deep yellow, orange and red.....	.50	3.50
FRITILLARIA MALEAGRIS (Guinea Hen Flower). In mixture excellent for naturalizing.....	2.25	15.00
GALANTHUS (Snowdrops).		
Nivalis . Single Snowdrops..... (\$40.00 per 1000).....	.90	6.50
Nivalis Double . Double Snowdrop.....	.65	4.50
ERANTHUS (Winter Aconite).	.90	6.50
Hyemalis . Excellent for naturalizing and rock work.....	.50	3.50
IXIA . In splendid mixture.....	.50	3.50
Viridiflora . Excellent.....	.85	6.00
MUSCARI (Grape Hyacinth). Fine for naturalizing and planting in clumps among perennial borders, etc. Blooms early in April.....		
Botryoides . Blue, per 1000, \$30.00.....	.50	3.50
Botryoides Album . White.....	.85	6.00
Heavenly Blue, Bright Sky Blue . The best and largest of the Grape Hyacinths (\$35.00 per 1000).....	.60	4.00
Plumosum . (Feather Hyacinth). Violet blue. Spikes often 8 inches long and of perfect pyramid shape. Splendid for general garden use and naturalizing.....	1.15	8.00
SCILLA . All the varieties of Scilla family are splendid for naturalizing. Both form bells like small Hyacinths. They will bloom to perfection in shady places where no other flowers can be made to grow.....		
Siberica Sky Blue. One of the loveliest. Color sky-blue. Flowers outdoors at the same time as the Snowdrops. Fine for planting in the grass. \$40.00 per 1000.....	.65	4.50
Siberica Alba . The White variety of the above.....	.70	5.00
Campanulata Alba Maxima . Large pure white.....	.65	4.50
Campanulata Blue Queen . Large bright blue.....	.60	4.00
Campanulata Coerulea . Heavenly blue.....	.60	4.00
Campanulata Excelsior . Largest bright blue (late).....	.65	4.50
Campanulata Rosy Queen . Soft lilac rose.....	.75	5.50
Campanulata . In splendid mixture. \$30.00 per 100050	3.50

Scilla Siberica

Marks, Miss.

Elliott Nursery Company
Pittsburgh, Pa.

Gentlemen:

I am sending an order to-day and wish you would send the bulbs at once.

I want to tell you that I have never gotten bulbs from any concern that gave such satisfaction as the ones I have gotten from you. They are the largest flowers I have ever seen and everyone wants to know where I get my bulbs. It gives me pleasure to recommend your house to my friends.

Thanking you for your past favors, I am

(Signed) MRS. R. F. MARKS

Elliott Bulbs Require No Skill



The Gay and friendly early TULIPS

YOU can better appreciate the Tulip when you know that as much as 13,000 florins (\$5200) was paid for a single specimen early in the XVII Century. The craze for Tulips was then so great that men pooled their money to buy "a share" in a particularly fine flower, and many fortunes were made during this famous Tulip speculation.

Those old varieties have long since been discarded for better types. Centuries of experiment have improved this flower unbelievably, and while Elliott's Tulips aren't priced at \$5000 today, they give a flower so beautiful that it must make the ghosts of those old speculators wring their hands in envious anguish just to see what they have missed!

Note: Take advantage of the extremely low prices of tulip bulbs this year and enlarge your garden. Owing to the present surplus of bulbs in Holland prices are lower than they have been for many years.

NAMED SINGLE EARLY TULIPS

Prices quoted are for orders booked July 1, 1928

	Doz.	100
Artus. Brilliant red.....	\$.60	\$4.00
Augusta. Lovely clear rose-pink; extra large flower of fine shape. Forces early.....	.70	5.00

	Doz.	100
Aurora. Saffron yellow, shaded pink. Very exquisite. 20 each.....	\$2.25	
Belle Alliance. Scarlet; very fine.....	.75	5.50
Blushing Bride. Lovely bright pink; very early.....	.75	5.50
Cardinal Rampollo. New. Yellow, bordered orange; a conspicuous color.....	1.15	8.00
Chrysolora. Large; golden-yellow; best yellow for outdoors.....	.75	5.50
Couleur Cardinal (True). Cardinal-red; one of the best.....	.90	6.50
Cottage Maid. White; edged with rose; extra fine; lovely; splendid for bedding.....	.75	5.50
Cottage Boy. Bronze-yellow, with orange....	.75	5.50

Inferior Bulbs Often Cost More Than Elliotts

De Wet. Beautiful deep orange, shaded golden yellow at the base of the petals. A very artistic flower and one of the finest newer sorts in cultivation. There is no other orange variety which equals it in brilliancy. It is therefore one of the showiest bedders, and as it forces splendidly we can recommend it for all purposes. Each, \$0.20.....	Doz. 100	\$2.25	\$15.00
Diana. Purest white with yellow base. Extra fine handsome flower and one of the finest white early Tulips in existence. We strongly recommend it.....		.60	4.00
Fred Moore. Dark orange; very tall; early...		.70	5.00
Goldfinch. Golden yellow; sweet-scented; a splendid sort.....		.90	6.50
Hobbema (Sarah Bernhardt). Crushed Strawberry; distinct and lovely.....		.85	6.00
Ibis. Deep rose, flushed white at the bottom of the petals and yellow base. A beautiful flower of great substance and brilliant coloring.....		1.10	7.50
Joost Van Vondel. Large; cherry-red and white; splendid.....		.75	5.50
Keizerskroon. Red and gold; large and fine. A grand Tulip.....		1.10	7.50
Kohinoor. The darkest red single early Tulip. Flowers are finely shaped and of a rich velvety deep crimson. A fine variety for massing.....		.90	6.50
Lady Borcel. White. Silvery white; magnificent flower; the finest.....		.75	5.50
La Reine Maximus. A great improvement of the old variety La Reine which is no longer a satisfactory bloomer. Flowers are twice the size of the old variety and of the same lovely rosy white.....		.70	5.00
La Riente. Most lovely bright pink, shaded carmine-rose; very attractive.....		.70	5.00
Max Havelaar. Blood orange, flushed salmon rose; a unique variety with striking color. Fine for bedding and forcing.....		.90	6.50
McKinley. Inside orange-red; outside rosy-red shaded orange—unique and very bright color.....		.75	5.50
Mon Tresor. Yellow; extra fine; best yellow for early forcing.....		1.00	7.00
Moonbeam. Primrose yellow, with lighter yellow edge. An exceptionally large open flower. A magnificent variety and in our opinion the finest yellow early.....		1.25	9.00
Pink Beauty. True. Bright pink and white extra fine.....		1.75	12.00
Primrose Queen. Soft primrose; distinct, lovely for bedding or forcing.....		.70	5.00
Prince of Austria. True. Orange shaded scarlet; very fine.....		.65	4.50
Proserpine. Queen of Tulips. Silky carmine-rose; perfect form. Sweet-scented.....		.90	6.50
Queen Alexandra. Pure glowing carmine. A magnificent new variety for the border. Will give great satisfaction.....		1.50	10.00
Rising Sun. Deepest golden yellow. Gigantic, long flower of elegant form borne on a strong stem 16 inches tall. By far the finest of the deep yellow early Tulips.....		1.15	8.00
Van der Neer. Deep violet. Very large open flower beautifully formed. A superb bedding Tulip. Especially attractive when planted in combination with a primrose yellow variety.....		1.15	8.00
Vermilion Brilliant (True). Dazzling scarlet; very striking.....		.80	5.75
White Beauty. This is a pure white sport of pink beauty and it is destined to become quite as popular as its parent. Flowers			

large, of fine substances and purest white. Each, \$0.15.....	Doz. 100	\$1.50	\$10.00
White Hawk (Albion). The finest pure white tulip in cultivation.....		.70	5.00
White Swan. White, late, large and fine.....		.60	4.00
Extra Fine. Single Mixture. While the bulbs are not as fine in quality as the named sorts listed above, they are, nevertheless, the finest mixture it is possible to obtain. We have discontinued all lesser grades as being untrustworthy. Price 1000, \$35.00.....		.55	3.75

A Hint of What the Future Holds

THE tulips, which your grandmother or even your mother grew, are for the most part no longer seen in your garden having long since been supplanted by better varieties. The great Dutch Hybridists are still working upon tulips and it is likely that your grandchildren will not plant the early tulips which now give you so much joy. A new race of tulips which promises ultimately to replace the entire early group is being developed.

This new race will have the form and the substance of the Darwin group, will force easier and earlier than the single early group and will bloom nearly as early in the garden. The color range promises to be more gorgeous than either the Darwin or the early group.

It probably will be years before these new tulips will be available for general use, however, you maybe interested to know what your children's children are likely to plant. Therefore, we take pleasure in offering a very few of the new—

TRIUMPH TULIPS

	Each	Doz.	100
Acral. Soft lilac, with white edges on outer petals, pointed flower.....	\$.25	\$2.75	\$20.00
Albany. Petunia lilac, changing to mauve, feathered white, medium sized flower, elegant shape.....	.25	2.75	20.00
Astoria. Cream white, with broad edge of deep cherry rose, large flower, strong stem.....	.30	3.50	28.00
Georgia. Cream white flower with a margin of deep carmine toward the edges of the petals.....	.30	3.50	28.00
Hydrus. Old rose, changing into a golden edge on outer petals; inside gold, fine regular shape.....	.30	3.50	28.00
Lord Carnavon. Light pink with white edges, white base; pointed flower on tall stem.....	.20	2.00	15.00
Memphis. Deep rose, margined sulphur yellow, cream white base, very unusual coloring.....	.25	2.75	20.00
Missouri. Deep, glossy wine red, large flower.....	.20	2.00	15.00
Ohio. Carmine red, shaded violet purple, white base; large loose flower of very attractive coloring.....	.25	2.75	20.00
Prof. Tendeloo. Deep amaranth red, shaded purple with broad margin of deep citron yellow, large flower....	.30	3.00	25.00

See Special Tulips in Color



Note: Take advantage of the extremely low prices of tulip bulbs this year and enlarge your garden. Owing to the present surplus of bulbs in Holland prices are lower than they have been for years.

Double Early Tulips

A TULIP WITH A LONGER LIFE

Elliott's Double Early Tulips Last Much Longer Than Single Varieties

THE gods gave Achilles his choice between a short life of glory and a long life of ease—and Achilles chose to die a young hero.

Because the brief but glorious life of the single Tulip makes it a sort of "Floral Achilles", horticultural genius has given us the Double Early Tulip to carry on where the single species leaves off.

This sturdy, robust bulb has a much longer life than the old variety and gives a brilliantly massive flower which blooms just a bit later. The fact that it lasts twice as long and has a double blossom merely makes this variety doubly attractive!

	Doz.	100		Doz.	100
Boule de Nieve (White Peony). New pure white, large, peony-like flower, splendid.	\$.75	\$5.50	Imperator rubrorum. Brilliant scarlet; fine for forcing and one of the grandest for bedding.	\$.90	6.50
Crown of Gold. Splendid yellow; fine for forcing.	.85	6.00	La Candeur. Pure white; a splendid bedding kind.	.70	5.00
Cochineal. Scarlet.	.85	6.00	Lac Van Haarlem. Brilliant rosy velvet; a unique color; very large flower.	.90	6.50
Electra. Sport of Murillo. Carmine red. Beautiful color, larger and more double than its parent.	1.25	9.00	La Grandesse. Dark pink; large and very double.	.85	6.00
Gloria Solis. Deep scarlet edge, with bright yellow.	.75	5.50	Lord Beaconsfield. Dark pink; very double and large.	.85	6.00
Golden King. Pure canary yellow. A very large beautiful flower. The finest of the yellow Double Tulips. Very effective.			Lucretia. Fine pink; large.	.70	5.00
Height, 13 inches.	1.10	7.50	Mr. Van der Hoef. A yellow sport of Murillo with all its superb qualities. One of the		

Double Tulips Last Twice as Long

very finest of the primrose yellow Double Tulips. A very lovely flower. Height, 13 inches,	Doz.	100	
Mystery of India. The color is terra cotta with bronze and rose, a combination hard to describe but exceedingly beautiful. The flower is of tremendous size and very double and the stem is longer and stiffer than is usual in tulips of this group.	\$1.00	\$7.00	
MURILLO. Delicate blush-pink. A very fine flower with a lovely color. An old variety but still one of the handsomest of the Double Tulips. It forces very easily.....	.85	6.00	
Peach Blossom. Deep rosy-pink, deepening with age to a deep rose. A very fine flower with a wonderful color. A new variety of superb quality, which we are glad to recommend. Height, 12 inches.90	6.50	
Prince of Orange. Bright, rich orange; large flower.....	1.15	8.50	
Rose d'Amour. Extra fine; delicate pink; a beauty.....	.90	6.50	
Rubra maxima. Early; bright red; splendid bedder, taking the place of Rex rubrorum75	5.50	
Salvator Rosa. White and deep rose. A surpassingly beautiful flower.....	.75	5.50	
Schoonoord. A pure white sport of Murillo; very beautiful large flowers. The finest of the pure white Double Tulips.....	.75	5.50	
Tea Rose (Brimstone Beauty). Yellow, shaded apricot, distinct and lovely.....	.60	4.00	
Tournesol. Red and yellow. A most show-striking flower.....	.85	6.00	
Titian. Crimson-scarlet, edged with golden-yellow, fine for bedding.....	.85	6.00	
Toreador. Reddish orange and yellow.....	1.15	8.00	
Vuurbaak. Bright vermilion; splendid.....	.85	6.00	
Extra fine double mixed Tulips. While these bulbs are not as fine in quality as the named sorts listed above, they are nevertheless the finest mixture it is possible to obtain. We have discontinued all lesser grades as being untrustworthy, 1,000, \$40.00	.65	4.50	



Crown of Gold Double Tulip



Murillo Tulip

Mix Your Tulips By Color

THE most effective method of using Tulips is to take advantage of their color varieties. Early Double Tulips come in a wide range of tints and hues, and the practice of planting rows of a different color gives truly delightful effects. Those who like startling contrasts get as much fun out of Tulips as those who prefer delicate tints since the color combinations are endless.

Elliott Nursery Company
Pittsburgh, Pa.
Gentlemen:

Centralia, Wash.

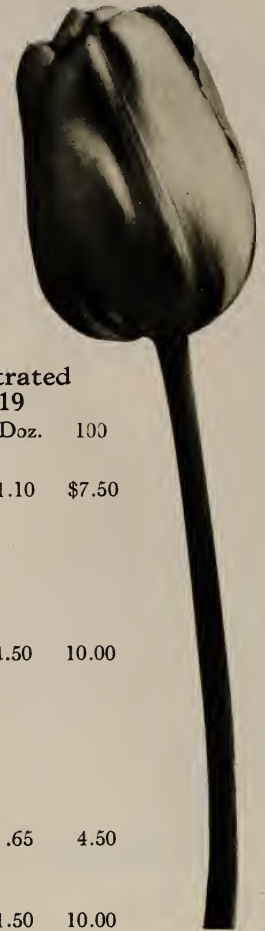
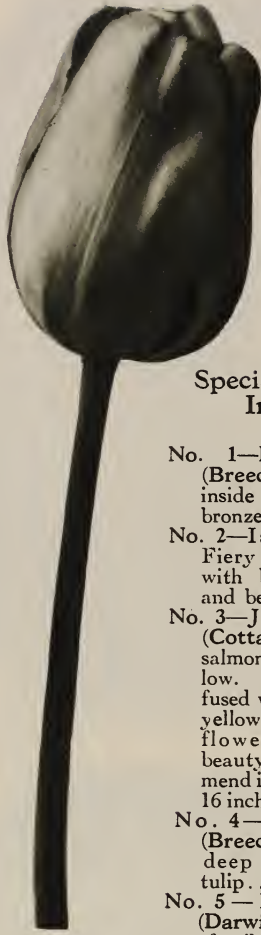
I have certainly been greatly pleased with the way you have filled my past orders. Not only were the bulbs much larger than I had received from other nursery men but the flowers were a constant source of admiration and pleasure. Our lawn was visited every afternoon while they were in bloom by people who said repeatedly, "They did not know such tulips were in existence." I honestly believe my tulips superior to any in the Government bulb farm.

Sincerely yours,
(Signed) DARL F. VINCENT

Double Tulips Are Ideal for Bedding

A Tulip Color Guide

ON the following four pages you will find a concise result of many weeks of experiment: four varieties of Tulips correctly blended by color. Mr. R. F. Elliott, himself an accomplished landscape architect, worked with these combinations until he had four groups of five different bulbs expressing the best in color harmony. You will get the best results by considering each page as a unit, planting all five bulbs in equal numbers and thus capitalizing their striking effect *en masse*.



Special Varieties Illustrated in Color on Page 20

	Doz.	100
No. 1—Bronze Queen (Breeder). Soft buff, inside tinged golden bronze.....	\$.60	\$ 4.25
No. 2—Isis (Darwin). Fiery crimson-scarlet with blue base; large and beautiful.....	.60	4.25
No. 3—John Ruskin (Cottage). Deep rose salmon, edged pale yellow. Inside lilac suffused with soft rose and yellow margin. Very long flower of exquisite beauty. We recommend it highly. Height, 16 inches.....	.65	4.50
No. 4—Velvet King (Breeder). The finest deep purple maroon tulip.....	1.25	9.00
No. 5—Remembrance (Darwin). Bluish lilac of a silvery character. Inside deep violet. A grand variety. Height 25 inches.....	.75	5.50

Special Varieties Illustrated in Color on Page 19

	Doz.	100
No. 1—Copernicus (Breeder). Finest light brown and rose Breeder tulip.....	\$ 1.10	\$ 7.50
No. 2—Louis XIV (Breeder). Considered one of the most beautiful tulips in cultivation. Rich purple shading to golden bronze near the edges of the petals. The very finest of tulips....	1.50	10.00
No. 3—Euterpe (Darwin). Silvery lavender edged pale lilac. Base white and blue. A long flower of beautiful shape, the finest lavender to plant with bronze Breeder tulips. Excellent for forcing.....	.65	4.50
No. 4—Godet Parfait (Breeder). The best bright blue violet. A very striking tulip....	1.50	10.00
No. 5—Baronne de la Tonnaye (Darwin). Vivid Pink. A superb variety.....	.50	3.50

City of Haarlem

Blue Celeste

Special Offer of Varieties Illustrated

Collection No. 1 In Color on Page 20 Five bulbs each of the 5 varieties (25 bulbs).....	\$ 1.50
Collection No. 2 Ten bulbs each of the 5 varieties (50 bulbs).....	2.80
Collection No. 3 Twenty bulbs each of the 5 varieties (100 bulbs)..	5.50
Collection No. 4 Thirty bulbs each of the 5 varieties above (150 bulbs).....	8.00

Special Offer of Varieties Illustrated

Collection No. 5 In Color on Page 19 Five bulbs each of the 5 varieties (25 bulbs).....	\$ 1.85
Collection No. 6 Ten bulbs each of the 5 varieties (50 bulbs).....	3.50
Collection No. 7 Twenty bulbs each of the 5 varieties (100 bulbs)..	6.75
Collection No. 8 Thirty bulbs each of the 5 varieties above (150 bulbs).....	10.00

“Gold Medal Darwins”—The Best to be Had

THE Elliott customers who want the best regardless of cost have built up an enormous demand for the “Gold Medal Darwins” listed below. Many began with the cheaper grades and found the results so remarkable that their enthusiasm has naturally carried them far beyond price.

We can say, in all candor, that these bulbs have never been surpassed!

	Doz.	100	Doz.	100
Blue Celeste. Violet purple with white base. A fine flower of excellent form. Height, 30 inches. Each, \$0.25.....	\$ 2.75		\$ 1.75	\$ 12.00
Centenaire. Violet rose, lighter toward the edge. A fine large flower of perfect shape... City of Haarlem. Magnificent brilliant deep	.60	4.00		
scarlet overlaid with dull bloom.				
Duchess of Hohenberg. Lilac mauve with deep heliotrope flush through center of petals. Large, long flower of exquisite coloring carried on a very tall elegant stem. Height, 30 inches..... Each .20.....			2.25	16.00

5% For Cash Before July 1st, 1928



© ELLIOTT NURSERY COMPANY 1928

1 COPERNICUS 2 LOUIS XIV 3 EUTERPE 4 GODET PARFAIT 5 BARONNE DE LA TONNAYE

For prices see page 18







© ELLIOTT NURSERY COMPANY 1928
1 SOPHROSYNE 2 VIKING

3 AFTERGLOW
For prices see page 23

4 BLEU AIMABLE

5 APHRODITE

Special Varieties Illustrated
In Color on Page 22

	Doz.	100
No. 1—Sophrosyne (Darwin). Flesh-colored, rose, bordered silvery white; charming.	\$.65	\$4.50
No. 2—Viking (Darwin). Violet with pale lavender edges, a very stately Darwin of exquisite coloring and very large size. Height, 27 inches.75	5.50
No. 3—Afterglow (Darwin). Deep orange suffused with salmon and salmon edge. Large flower of good substance and unusual coloring. Carried on a tall stately stem. Height, 26 inches.	1.20	8.50
No. 4—Bleu Aimable (Darwin). Beautiful lilac. Inside violet with white base and blue star. Height, 25 inches.75	5.50
No. 5—Aphrodite (Darwin). The finest clear rose tulip.	2.25	15.00

Special Varieties Illustrated
In Color on Page 21

No. 1—Vulcain (Breeder). Reddish apricot with broad margin of bright buff yellow, inside darker. Beautifully shaped flower in a color unlike any other.	1.50	10.00
No. 2—Bacchus (Breeder). Darkest blue with deep violet brown. The finest of the dark blue Breeder Tulips.	1.65	11.00
No. 3—Princess Elizabeth (Darwin). A long flower of the deepest pink, splendid for breeding.60	4.00
No. 4—Madras (Breeder). Splendid dark bronze.65	4.50
No. 5—Eclipse (Darwin). The finest deep red Darwin Tulip.	1.75	12.00

Special Offers of Varieties Illustrated in Color on Page 22

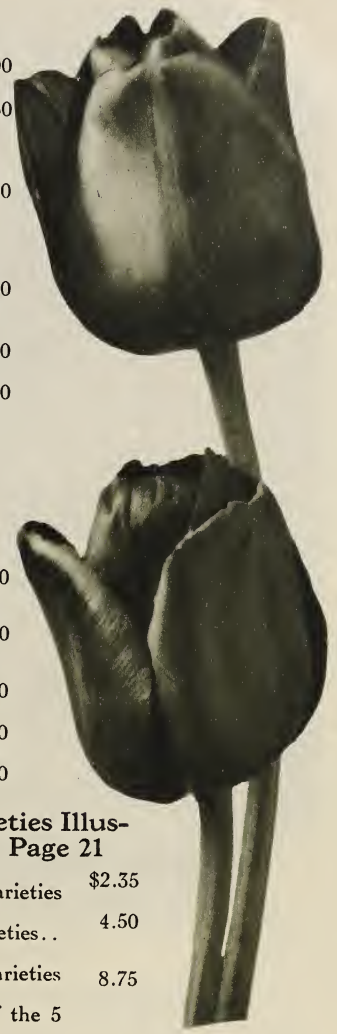
Collection No. 9	
Three bulbs each of the 5 varieties	\$2.20
Collection No. 10	
Six bulbs each of the 5 varieties. . .	4.10
Collection No. 11	
Twelve bulbs each of the 5 varieties	7.85
Collection No. 12	
Twenty-five bulbs each of the 5 varieties above.	11.75

Special Offers of Varieties Illustrated in Color on Page 21

Collection No. 13	
Three bulbs each of the 5 varieties	\$2.35
Collection No. 14	
Six bulbs each of the 5 varieties. . .	4.50
Collection No. 15	
Twelve bulbs each of the 5 varieties	8.75
Collection No. 16	
Twenty-five bulbs each of the 5 varieties above.	13.00



Glory of Walworth



Jubilee

“GOLD MEDAL” DARWIN TULIPS

(Continued from page 18)

Faust. The finest deep purple maroor Darwin tulip.	Doz.	100		
	\$1.00	\$7.00		
Giant. Deep purple with reddish glow. Base white and blue. Enormous flower on strong stem. Height, 28 inches.	1.10	7.50		
Glory of Walworth. Heliotrope lilac, edged with paler lilac. Long full flower with petals slightly incurved at top. A flower of unsurpassed beauty. Height, 28 inches.	1.00	7.00		
Gryphus. Brilliant, deep shiny purple. A remarkably fine flower of excellent lasting quality. The best of its color. Height, 26 inches.	1.15	8.00		
Jubilee. Rich blue-purple with white and blue base. One of the best blue Darwins grown. Flower very large of open form and excellent substance. Strongly recommended. Height, 29 inches.	1.25	9.00		
King George V. The finest brilliant scarlet Darwin Tulip. Each, \$0.20.	2.25	15.00		
La Fiancee. Beautiful old rose shading into delicate pink at the margin of the petals. Base blue. A large full flower of artistic coloring and excellent substance. Height, 30 inches.	\$1.25	\$9.00		
Louis de la Valliere. Bright sherry-rose, blue base marked white. A Tulip of remarkable beauty and very clear coloring. One of the showiest of the Darwins. Height, 24 inches. Each, \$0.20.	2.25	16.00		
Princess Mary. Exquisite deep pure rose. Very large substantial flowers borne on very tall stems. The tallest and most perfect of the real rose Darwins. Decidedly the finest in every respect. Do not confuse this variety with “Queen Mary” another Darwin white. Each, \$0.60.	6.50			
Prince of Wales. Brilliant crimson flushed scarlet. Huge flower borne on tall stem. A striking color for outdoor planting. Each, \$0.20.	2.25	15.00		

Elliott Bulbs Are Perfect and Low Priced



Note: Take advantage of the extremely low prices of tulip bulbs this year and enlarge your garden. Owing to the present surplus of bulbs in Holland prices are lower than they have been for years.

MR. R. F. ELLIOTT PERSONALLY INSPECTING THE FLOWERS OF A LEADING DUTCH GROWER.

DARWIN—PRINCE OF TULIPS

Generations of Evolution in Tulip Culture Have Resulted in the Darwin

NOT only we who sell them — but, what is more important, those who buy them are enthusiastic about Elliott's Darwin Tulips. For instance:

"I want to praise your bulbs I purchased two years ago," writes Mrs. W. D. Knessi, of Riverdale, Maryland. "The Darwin Tulips are gorgeous and

FOR PERMANENT PLANTING

Darwins are most valuable for permanent planting. They bloom for years and are, therefore, highly prized for use in shrubberies and borders. This variety thrives better than the early Tulips in California and the Southern states.

have more than tripled in quantity. They are the admiration of the town and I'm only sorry I haven't room for hundreds more."

The files in our main office are literally full of letters just like this.

What could we tell you about Elliott's Darwins that would be more illuminating?

GENERAL LIST OF DARWIN TULIPS

Andre Doria. Deep velvety maroon with black base. One of the finest border varieties of its color and of a low price. Will give great satisfaction.....	Doz.	100			
Ariadne. Brilliant, scarlet with blue base; splendid bedder.....	.75	\$5.50			
Beethoven. Beautiful, soft rose-pink, shading to silvery pink.....	.65	4.75			
Bartigon. Fiery crimson, white center.....	.75	5.50			
	.50	3.50			
CLARA BUTT. Delicate salmon-pink; one of the oldest varieties among the Darwins. It is enjoying a great popularity because of its lovely color, fine flower and reasonable price, and it remains one of the very best. Height, 25 inches. Per 1000, \$32.50.....			.50	\$3.50	
CREPUSCLE. Very pale lilac with deep rose flush at the tip of petals. A large beautiful flower on a tall stem. Height, 28 inches....			.60	4.25	

Anybody Can Grow Elliott Bulbs



Beds of Darwin Tulips

	Doz.	100		Doz.	100
Dal Ongaro. Pale lavender-violet, inside deep lavender with white base.....	\$.60	\$ 4.25	FARNCOMBE SANDERS. Brilliant scarlet. A very handsome large flower of intense coloring. One of the finest and largest of the brilliant colored varieties. Height, 25 inches. Per 1,000, \$35.00.....	\$.60	4.00
DREAM. Beautiful lilac with flush of deep heliotrope. A very handsome variety which should be known better. Height, 25 inches..	.60	4.25	Flamingo. Uniform shell pink. Pointed flower of elegant shape. Very attractive. Height, 28 inches.....	.70	5.00
Edmee. Vivid rosy pink.....	.60	4.00	Glow. Glowing vermilion.....	.60	4.00
Ethel Roosevelt. Lovely rose-colored flowers; very sweet-scented.....	1.00	7.00			
Europe. Brilliant scarlet-carmine.....	.55	3.75			



Please Read Page 39

	Doz.	100		Doz.	100
Gretchen. Delicate flesh color, very lovely...	\$.55	\$3.75	Pride of Haarlem. Rosy carmine. A very brilliant large flower and one which we can recommend highly. It has become one of the most popular, and with good reason. Height, 25 inches. Per 1,000, \$32.50.....	\$.50	\$3.50
Harry Veitch. Brilliant, blood-red.....	.60	4.00	Prince of the Netherlands. Brilliant rosy scarlet, shaded deep salmon-rose. A very large handsome variety of stately bearing. One of the showiest for the border. Height, 30 inches.....	.65	4.50
King Harold. Deepest red with purple base; fine garden sort.....	.60	4.00	Princess Juliana. Salmon-orange-scarlet, a remarkable and beautiful flower.....	.70	5.00
La Tristesse. Dull slaty blue, with white base; very distinct.....	.65	4.50	Professor Rauwenhoff. Full cherry-rose, with ivory-white and blue star at base; flower of enormous size; very tall.....	.60	4.00
La Tulipe Noire. Comes nearest of all to black; flowers of enormous size.....	.75	5.50	Psyche. Soft salmon-rose, very lovely; borne on long, stiff stems.....	.60	4.00
L'Ingenue. White suffused with delicate rose, shading to deeper rose in the center of the petals. A magnificent flower of exquisite beauty. Height, 27 inches.....	.60	4.25	Purple Perfection. Glossy claret-purple; large cup-shaped flower.....	.75	5.50
Madame Krelage. Pink, light bordered; extra	.55	3.75	QUEEN MARY. The finest cerise-rose Darwin Tulip.....	.90	6.50
Marconi. Large violet flower with yellow center; distinct.....	.65	4.75	QUEEN OF THE BRILLIANTS. Bright rosy-carmine; large showy flower of erect habit..	.65	4.50
Massachusetts. Light pink; large flower.....	.55	3.75	REMEMBRANCE. Bluish lilac of silvery character. Inside deep violet. A grand variety. Height, 25 inches.....	.75	5.50
MATTIA. Brilliant rosy-red, shaded lilac, blue base. Lasts longer in bloom than any other variety, splendid.....	.65	4.50	Reverend Ewbank. Soft, silvery heliotrope with silver-gray flush darkening towards the base, a beautiful color.....	.50	3.50
MELICETTE. The finest soft-lavender Darwin Tulips.....	.75	5.50			
Mrs. Potter Palmer. Bright purplish violet; fine, large flower.....	.65	4.50			
Nora Ware. Silvery lilac, shaded white; extremely beautiful.....	.60	4.00			
Ouida. Bright scarlet; very tall; best scarlet bedder.....	.60	4.00			
Painted Lady. Milk-white on dark stem; an effective combination.....	.55	3.75			
Philippe de Commines. Velvety dark violet.	.60	4.00			



Clara Butt Tulip



Dream Tulip

"Some Service!" J. H. Williamson, Rutherford, N. J.

	Doz.	100
RONALD GUNN. Deep violet blue shading to lilac at the edge. One of the most beautiful blue Darwins for indoor culture and forcing...	\$.75	\$ 5.50
SALMONEA. Clear rose pink with amber leaves. A truly beautiful and unusual variety.....	1.25	9.00
Sieraad Van Flora. Bright red, with blue base, magnificent flower of a very distinct color.....	.60	4.00
Sir Trevor Lawrence. Lilac-blue, an enormous flower on tall-stem.....	1.10	7.50
VALENTINE. The finest soft heliotrope Darwin Tulip.....	.75	5.50
WILLIAM COPLAND. SYN. Sweet Lavender. The best Darwin Tulip for forcing. It may be grown in the house as easily as the early Tulips. Also fine for the border. When grown outside, color is rosy lilac. When forced, color is beautiful lavender. Height, 22 inches.....	.60	4.25
William Pitt. Deepest rich crimson. A very large flower of gorgeous coloring. A very fine border variety.....	.60	4.00
White Queen. Clear white, tinged delicate blush.....	.55	3.75
Yolande. Soft salmon-rose with lighter yellow base. A very fine flower of exquisite coloring. Very fine when planted in front of evergreens. Each \$0.20.....	2.25	
Zanzibar. Rich, glossy, maroon, center dark blue and white; large, fine flower.....	.75	5.50
Zulu. Rich, velvety purple-black; large egg-shaped flower; very distinct.....	.60	4.25
ZWANENBURG. The only pure white Darwin tulip. A truly great novelty. Large substantial flowers on tall stems. Each \$0.60.....	6.50	
Fine Mixed Darwin Tulips. Per 1,000 \$32.50	.50	3.50
100 Darwin Tulips. In 25 named varieties (not less than 100 furnished).....		5.00

A "GET ACQUAINTED" OFFER OF
DARWIN TULIPS

If you have never used Elliott's Darwin Tulips and would like to try out a test planting, the following listing gives you a prime cross-section of the Darwin group to work from. Here you have everything you need in color and form, each selection being identical to the others except for quantity. These special introductory collections are a great convenience to those chiefly interested in a trial order since it eliminates the trouble of individual selection.

COLLECTIONS OF NAMED DARWIN TULIPS

Collection W. 1 each of 15 choice and tested varieties, 15 in all.....	\$ 7.75
Collection X. 3 each of 15 choice and tested varieties, 45 in all.....	2.00
Collection Y. 6 each of 15 choice and tested varieties, 90 in all.....	3.75
Collection Z. 12 each of 15 choice and tested varieties, 180 in all.....	7.25

These prices do not include delivery, but bulbs will be sent by parcel post when requested and postage charged at cost.

Positively No Orders Accepted for These Collections After July 1st, 1928

DARWIN TULIPS

Elliott's Hand Made Mixture

Guaranteed to Contain 10 Distinct Varieties

—All Named Above—

25 FOR \$1.10 50 FOR \$2.00 100 FOR \$3.75 500 FOR \$17.50 1000 FOR \$32.50

THE usual method of preparing a mixture of anything is to take so many of this, so many of that and so many of the other, throw them in a pile, and mix them with a wooden shovel. A mixture so made is a perfectly honest mixture but what an individual customer gets out of it is obviously the result of chance.

For advance orders only, we will prepare a hand-made mixture. Our new bulb warehouse, the finest thing of its kind in the world, contains a thousand bins. Every day, as required, ten employees will count out five bulbs each from ten named stocks and dump the fifty bulbs into one bin, repeating the operation until all of the bins are filled. Each bin will contain fifty bulbs and no more. Consequently to every customer who orders fifty bulbs of this mixture, we guarantee that he will receive ten named varieties, five bulbs of each variety. We further guarantee that all the varieties used are offered in the foregoing named list. We cannot afford, at this price, to pack the bulbs under separate names nor allow the customer to specify what varieties shall be included. The choice of varieties must be left entirely to us.

Customers wishing less than fifty bulbs will have their orders counted from one of these bins. Excepting where the order calls for bulbs in multiples of fifty, we cannot guarantee that they will be filled with equal quantities of the ten named varieties but it is probable that they will be.

To the best of our knowledge and belief no bulb house in the world has ever before undertaken to prepare a mixture as fine as this and it will probably be years before anyone else can attempt it.

MAY FLOWERING OR COTTAGE TULIPS

TO MAKE YOUR GARDEN COMPLETE

THESE are many who prefer the fragile delicacy of the Cottage Tulip to the sturdy massiveness of the other types. Stately, refined, old fashioned—they are the sign of the Complete Garden!

Note: Take advantage of the extremely low prices of tulip bulbs this year and enlarge your garden. Owing to the present surplus of bulbs in Holland prices are lower than they have been for years.

We'll Make Up an Assortment If You Wish

	Doz.	100
Amber Crown. Pale yellow with broad stripe of lilac brown through center of petals. Base green. A beautiful variety. Height, 18 inches.....	\$.85	\$ 6.50
Avis Kennicott. Rich deep yellow, with black base. A very large flower and one of the best bright yellow Cottage Tulips. Height, 25 inches.....	1.65	11.00
Bouton d'Or. Deep golden yellow; of great value for outdoor cutting. Splendid.....	.60	4.00
Carnation. The old English Picotee. Snow-white, changing to carmine-rose, exquisitely beautiful.....	.60	4.00
Carrara. Enormous pure white flower on a tall stem. An unusual novelty since it is the first really fine pure white tulip. This variety fills a most important place in the Cottage group since it gives us the one color which has heretofore been unprocurable necessary to complete our color schemes in the glorious late tulips. Each \$.40.....	4.50	
Columbus. Clear yellow with broad red stripe through the center of petals. A huge flower and very showy.....	.90	6.50
Dido. Soft orange-red gradually suffusing to a deep red at the extremes of the petals. The inside of the flower is a clear brilliant orange without a blemish and strikingly beautiful. The base of the flower is black bordered deep yellow. A flower of gorgeous extravagance in color and royally placed on a tall strong stem 30 inches high. Each \$.30.....	3.25	
Doris. Soft lilac-rose, flushed rose; blue and green base.....	.65	4.50
Elegans. Rich crimson scarlet. A very showy flower with elegant reflexed petals, on a very tall stem.....	.75	5.50
Elegans alba. Large white flower of exquisite gracefulness. Each petal reflexing and margined with rosy carmine. One of the most lovely Cottage Tulips in existence. Height, 20 inches.....	1.20	8.50
Ellen Willmott. One of the finest Cottage Tulips. Flowers very large, exquisitely shaped, of a soft creamy yellow, deliciously fragrant. Height, 18 inches.....	.65	4.50
Emerald Gem. Bronze, flushed rose, with a deep green base. A very beautiful variety. Height, 20 inches.....	.70	5.00
Fairy Queen. Soft rosy heliotrope, suffused with salmon yellow. A very large flower, with a lovely color. Height, 20 inches.....	.60	4.00
Flava. Lemon yellow; large beautiful flower on a tall stiff stem. A fine variety to plant among the pink lavender and lilac Darwin Tulips. Will remain in bloom longer than almost any other Cottage Tulip. Height, 25 inches. Each, \$.25.....	2.75	
Gesneriana aurantiaca maculata (Orange Globe). Large; brilliant orange; extra fine..	.70	5.00
Gesneriana spathulata. For bedding out in masses it deserves to be largely grown. Height, 18-24 inches. Flowers of enormous size, on long, graceful stems. Color rich crimson-scarlet, with glittering blue-black center. The demand for this grand Tulip has been so great that it is very difficult to get flowering bulbs. To be sure of getting bulbs that will bloom, we pay a premium in Holland for guaranteed bulbs. This makes them higher priced, but our bulbs will bloom satisfactorily.....	.60	4.00
Gesneriana ixioides. Beautiful yellow, with black center.....	.65	4.50

	Doz.	100
Gesneriana lutea. Pure yellow, extra fine....	\$.60	\$ 4.00
Glare of the Garden. Immense scarlet flowers.....	.75	5.50
Golden Crown. Yellow. Slightly edged with red. Fine for bedding.....	.55	3.75
Hammer Hales. Golden brown, suffused with old rose. Inside apricot with yellow edge and green base. A very long beautiful flower. Height, 24 inches.....	.90	6.50
Honeymoon. Large fine flowers of the softest primrose. Unusually tall growing up to 36 inches and therefore the most desirable variety for planting among the Darwin tulips. In the Darwin tulip group no satisfactory yellow has yet been developed. Each, \$.20	1.75	12.00

(Continued on page 30)

Pomona, Calif.

Elliott Nursery Company
Pittsburgh, Pa.

Dear Sirs:

Please be sure to send me a bulb catalogue as I have an order ready to send in as soon as I get the price list. I have enjoyed the bulbs I got from you six or seven years ago as much or more than anything I have ever had, and I want to add some more varieties to those I already have. I think your bulbs are wonderful, and I speak a good word for Elliott's whenever I can.

Most sincerely,
(Signed) WINIFRED M. SHAFER



Tulip Inglescombe Pink

They Don't Grow Better Bulbs than Elliott's



Cottage Tulip "Picotee"

(Continued from page 29)

	Doz.	100
Idyll. Lively rose of fine texture. Inside salmon-pink. A very lovely variety.	\$.65	\$ 4.50
Illuminator. Clear yellow, flamed deep orange. A very large flower with a striking color. Very effective when planted among shrubbery or evergreens. Height, 25 inches. Each, \$0.15.	1.50	10.00
Innocence. One of the very few pure white Cottage Tulips and by far the best. A large flower of fine form and stately bearing. Height, 20 inches. Each \$0.25.	2.75	
Inglescombe Pink. Salmon-pink; blue base; very brilliant, per 1000, \$32.50.50	3.50
Inglescombe Scarlet. Brilliant scarlet; enormous flower.65	4.50
Inglescombe Yellow. Glossy canary-yellow. The large globular flower has the true shape of the Darwin Tulip, hence it is called the Yellow Darwin, per 1000, \$37.50.60	4.00
Isabella, or Blushing Bride (Shandon Bells). Beautiful rose-pink, slightly shaded white; a most superb and distinct variety.55	3.75
Kingfisher. Soft yellow ground, feathered maroon and violet with green base. A very unique color combination. Height 18 inches. Each, \$0.20.	2.25	
Konigskroon. Red and yellow, like Keizerskroon, but late-flowering.75	5.50
La Merveille. A magnificent variety, with large, sweet-scented, orange red flowers.50	3.50
Mentor. Flowers of the deepest scarlet, well formed and robust, growing on a strong stem.	1.10	7.50
Moonlight. New. Light, soft yellow, enormous flower.70	5.00
Mrs. Kerrell. Soft rose with salmon border. Base blue and white. Large open flower with pointed petals. A lovely variety. Height, 18 inches.	1.10	7.50
Mrs. Moon. Pure yellow, large. The best of all yellow late Tulips; sweet-scented.90	6.50
Nectar. Beautiful deep carmine pink flowers slightly reflexed, graceful in form. Blooms earlier than the other Cottage tulips. Very strongly recommended.	1.10	7.50
Orange King. Beautiful bright orange, very large flower.65	4.50
Picotee, or Maiden's Blush. Long; clear white; the petals, which are pointed and elegantly reflexed, are beautifully margined and penciled on edges with bright pink.50	3.50

	Doz.	100
Picotee Yellow. The yellow counterpart of the above variety. Flowers are clear yellow with a narrow border of crimson which suffuses the flower as it ages. A lovely graceful variety.	\$.65	\$ 4.50
Primrose Beauty. Primrose, bordered rose; a beautiful Tulip.55	3.75
Pride of Inglescombe. White, edged carmine-rose; long, pointed flower; beautiful, .20 each.	2.25	
Quaintness. Golden bronze with old rose flush. A very unusual and beautiful color combination. One of the finest varieties. Height, 20 inches. Each, \$0.25.	2.75	
Retroflexa. Splendid yellow flower, with elegantly recurved petals; fine for cutting.65	4.75
Royal White. Large; pure white; of great substance.85	6.00
Sirene. Glistening satiny rose with paler edges. One of the Lily-shaped varieties of exquisite beauty. Height, 16 inches.85	6.00
Solfatar. Soft sulphur-yellow; a large graceful flower with reflexing petals.75	5.50
Solferine. Creamy white, with narrow border of soft yellow. Long, eggshaped flower of a most lovely color. Unsurpassed when planted in the shade. Height, 24 inches.	1.50	10.00
The Fawn. Large; light grayish rose, changing to rosy white. Distinct.60	4.00
Twilight. Light violet ground, flamed deep violet and bronze with distinct white stripe through the center of each petal and a white base. A very long finely shaped flower of an unusually rich coloring. Height, 23 inches. Each \$0.15.	1.50	10.00
Union Jack. Salmon-pink and bronze-striped. Unique and effective.75	5.50
Walter T. Ware. The deepest and richest of all the yellow Cottage Tulips. A remarkably beautiful flower of great substance. Height, 18 inches. Each \$0.20.	1.75	
Zomerschoon. Pure white ground. Flaked and feathered salmon-rose. Base white. A beautiful formed flower of unusual clear coloring. Height, 20 inches. Each \$0.50.	5.50	
May-flowering Special Mixture. 1000, \$52.50.50	3.50



Cottage Tulip Mrs. Moon

The Gorgeous Parrot Tulips

MOST curious and unique of the Tulips family, the Parrot variety is highly prized by those who love the picturesque. Their brilliant hues and their fringed, parrot-like form combine in an effect that is startling and extravagantly colorful. Mass a quantity of Parrot Tulips in a bed and you will have something that will make passersby stop and gape in amazement!

Not only are Elliott's *double-tested* Parrot Tulips easy to grow when properly planted, but they are also ideal for cut flowers. If you have a spot of light, sandy soil in a sunny location, you will get remarkable results with these bulbs.

	Doz.	100
Admiral of Constantinople. Fine red.....	\$.65	\$4.50
Cafe Brun. Brown and yellow stripe.....	.65	4.50
Lutea Major. Yellow; very fine free-blooming	.65	4.50
Markgraaf von Baden. True, orange-striped		
scarlet; extra fine.....	.65	4.50
Perfecta. Yellow and scarlet; large flower....	.65	4.50
Rubra Major. The finest red of all.....	.65	4.50
Fine Mixed. \$38.00 per 1,000.....	.60	4.00

LATE SHOW TULIPS

HERE we have the original strain from which most other Tulips have been developed—the flower that caused the great Tulip craze of 1635 about which we have already spoken.

Until the early 1800's this variety of Tulip remained in disuse except in England, but of late years some remarkable improvements have been made in its color and habits. Patient hybridizing has added many gorgeous creations to the range, and today the Late Show Tulip is again highly prized everywhere.

Garden experts used them freely for planting in clumps by themselves; among shrubbery and evergreen borders; by the water's edge or near a fountain.

	Doz.	100
Absalom (Bizards). Orange, feathered brown and yellow, very tall.....	\$1.10	\$7.50
Amphion (Bybloems). Violet, brown and white, very unusual.....	1.50	10.00
Apollo (Rembrandt). Lilac rose and white, striped dark carmine.....	1.10	7.50
Athalia (Bybloems). White, bordered and feathered rose.....	1.20	8.50
Black Boy (Bizards). Dark brown with gold and gray feathered black.....	1.10	7.50
Duke of Montrose (Bizards). Bronze, feathered golden yellow.....	1.15	8.00
Fancy (Bizards). Yellow, flamed brown.....	1.50	10.00
Glory of Holland (Bybloems). Pure white, bordered and feathered violet.....	1.50	10.00
Le Duel (Bizards). Bright yellow, feathered dark brown, very beautiful.....	1.50	10.00
Le Printemps (Rembrandt). Lilac and white, flamed dark red.....	1.10	7.50
Marco Spads (Rembrandt). White, flamed fiery red.....	1.10	7.50
Ponceau Transparent (Bybloems). Beautiful rose-red, striped white.....	1.50	10.00
Procles (Rembrandt). Violet flamed black and white.....	1.10	7.50
Quasimodo (Rembrandt). White feathered carmine.....	1.10	7.50

	Doz.	100
Red Prince (Rembrandt). Rose, flamed fiery red.....	\$1.10	7.50
Reine de Holland (Bybloems). Dark red and white.....	1.20	8.50
Romeo (Bizards). Yellow, feathered and bordered orange red.....	1.10	7.50
Vondel (Bybloems). Dark Violet-blue, feathered white.....	1.75	12.00

LATE SHOW TULIP COLLECTIONS

Bizarres. Red, on yellow ground, choice mixed varieties.....	.65	4.50
100 bulbs, in 10 named varieties— not less than 100 bulbs supplied.....		6.50
Bybloems. Red on white ground. Choicest mixed.....	.80	5.75
100 bulbs, in 10 named varieties— not less than 100 bulbs supplied.....		7.50
Rembrandt Tulips. Fine Mixed. Rembrandt Tulips are Darwin Tulips, but very queerly striped and feathered.....	.75	5.50
100 Rembrandt Tulips in 20 named varieties (not less than 100 furnished).....		6.50
Violettes. Violet, on white ground. Choicest mixed.....	.85	6.00
100 bulbs, in 10 varieties— not less than 100 bulbs supplied.....		7.50

DOUBLE LATE TULIPS

Blue Celeste (Blue Flag). Soft Violet-blue... ..	1.00	7.00
Yellow Rose. Yellow, sweet-scented.....	.70	5.00
Pensee Rose. Salmon-pink.....	2.25	



Tulip Parrot

Banks Pay 4% We Pay 5% for Cash



THE ARISTOCRATIC BREEDER TULIP

*F*OR this, among all the Tulips, fairly breathes aristocracy, refinement and nobility. Its color defies Man and fragrance is the kind that will never be imprisoned in a crystal bottle by some commercial perfumer. We can only urge you to make space for it if you want a garden that will do justice to your artistry and your taste.

Note: Take advantage of the extremely low prices of tulip bulbs this year and enlarge your garden. Owing to the present surplus of bulbs in Holland prices are lower than they have been for years.

	Doz.	100
Apricot. Dull, bronzy buff, shaded ruddy apricot base.....	\$1.10	\$7.50
Attraction. Light bluish violet, inside glowing purple, white base.....	1.25	9.00
Abd-el-Kader. Dull copper bronze with lighter edge. Inside deep bronze with green base. Height, 26 inches. A beautiful variety. Should be used with other bronze and brown Breeders.....	1.25	9.00
Cardinal Manning. Dark rosy violet.....	.85	6.00
Charles Dickens. Deep rose with white base. Large flower of excellent color. Fine for the border. Height, 22 inches.....	1.00	7.00
Chestnut. Very dark chestnut brown. A very beautiful color.....	.75	5.50
Coridion. Clear yellow with lilac flush, the finest of its color.....	1.75	12.00
Don Pedro. The finest deep coffee brown with narrow edge golden brown.....	1.50	10.00
Dryad. Old-rose flushed lilac. Edges of petals light bronze. A very beautiful color combination and one of the most magnificent of all the Breeder Tulips. It is still very scarce. Height, 22 inches.....	1.50	10.00
Favorite. Deep purple with reddish tint. Edge of petals lighter. Flower overlaid with slaty bloom. White base. Height, 29 inches.....	.90	6.50
Garibaldi. Light brown, suffused with lilac with broad edge of soft yellow; inside light bronze. Flower long with reflexing petals. Height, 31 inches. One of the most beautiful varieties. Strongly recommended. Each, \$0.50.....	5.50	
General Ney. Dull old gold. A very beautiful color. Height, about 25 inches....	1.00	7.00
Gloria. Dark lilac with bronzy yellow edge. Base yellow. An exquisite color. Height, 21 inches. Flower medium size.....	1.10	7.50
Golden Bronze. Beautiful bright golden brown. The best of its color.....	.70	5.00
Goldfinder. Crimson flushed with orange. A very striking color among the Breeders. Height, 26 inches.....	1.00	7.00
Gold Finch. Golden Bronze suffused with deep lilac through center of petals. Inside deep bronze with lighter edge. Base yellow. Pointed flowers on stately stem. Height, 29 inches. Each, \$0.20.....	2.25	
Groote Samson. Deep violet with light brown edge. Overlaid with a purple bloom. A large flower of exquisite coloring and beautiful form. Height, 25 inches.....	.85	6.00
Hamlet. Dull rosy brown. A large full flower of excellent quality. Height, 26 inches.....	.85	6.00
Heliose. A beautiful combination of deep brown and old rose. Inside deep brown edged golden bronze, base yellow. Large flowers with reflexing petals. A most exquisite variety. Height, 28 inches. Each, \$0.20.....	2.25	15.00
Indian Chief. One of the largest and most beautiful Breeder Tulips ever introduced. The flower measures often eight inches in diameter, and is carried on a strong erect stem 33 inches high. Color, deep Indian red flushed with purple. Each, \$0.75.....	8.00	
Jaune d'Oeuf. Soft yellow with delicate lilac flush through center of petals, very beautifying. Height, 26 inches.....	.90	6.50
La Singuliere. Silvery white margined dark maroon-crimson which suffuses the flower with age.....	1.50	10.00
Le Mogol. Delicate lavender suffused with deep mauve. A medium sized flower of exquisite form and coloring. Height, 25 inches.....	.90	6.50



Golden Bronze



Le Mogol

We Inspect Every Bulb We Ship



Violet Queen



Prince Albert

	Doz.	100
Lord Cochrane. Deep brown with clear yellow edge. One of the best of the brown Breeders. Height, 28 inches.	\$1.25	\$9.00
Lucifer. Magnificent terra cotta orange with rosy bloom. Each, \$0.20	2.00	13.00
Mabel. Deep pink with white flush through center of the petals. A fine flower of unusually clear coloring. Height, 22 inches. Each, \$0.12	1.15	8.00
Madam Lethierry. Crushed strawberry with salmon flush and lighter-edged. A medium size flower of lovely color. Height, 25 inches.	1.25	9.00
Marechal Victor. Softest lavender, suffused, with pale violet and primrose, shading into glowing bronze toward the edges of the petals. A very large, rather loose cup-shaped flower of exquisite coloring and gracefulness. Each \$0.35	3.75	
Marie Louise. Rose flushed with yellow. A most pleasing combination of colors.	.90	6.50
Medea. Salmon-carmine. One of the largest Tulips in cultivation with rosy edge. A beautiful combination. Height, 27 inches.	.75	5.50
Mr. Groenewegen. Light coppery yellow flushed lilac with rosy edge. A beautiful combination. Height, 27 inches.	.75	5.50
Panorama. Deep orange-red, shaded mahogany; immense flower of marvelous beauty.	.75	5.50
Pink Pearl. The coloring of the outside of the petals is an exquisite soft violet rose with a small white base. The inside of the petals pure white. Immense egg-shaped flower of most unusual coloring. Each, \$0.20	2.25	
Plutarchus. Beautiful bronze suffused with lilac. A magnificent variety.	.85	6.00
Prince Albert. Golden brown with purple flush. Large loose flowers slightly reflexing. Base green. The finest of its color. Height, 32 inches.	1.25	9.00
Prince of Orange. Orange red, light border.	1.50	10.00
Queen Alexandra. Soft sulphur-yellow. Lovely.	.75	5.50
Saloman. Beautiful lilac, shaded silvery white. Inside deeper lilac with white base. Long loose flowers on stems 30 inches high. A magnificent variety.	1.25	9.00
St. James. Lilac, edged tan, shaded light rose. Inside mahogany with golden brown edge. Very large flower on tall stem. Height, 28 inches. A superb exhibition variety.	.90	6.50
Superba. Maroon, covered with tender, ashy blooms. New and very attractive.	1.00	7.00
Turenne. Dark blue, heavily flushed bronze at margin; very large flower of finest color and form.	1.10	7.50
Violet Queen. The finest rose-velvet Breeder Tulip.	.85	6.00
Virgilius. Violet purple. Beautiful egg-shaped flower. A striking novelty.	1.00	7.50
Wilberforce. Fine apricot, edged primrose. Inside apricot yellow. A beautiful flower on a very tall stem. Height, 32 inches.	1.00	7.00
Yellow Perfection. Light bronze yellow, edged golden.	.90	6.50
Breeders. A special collection of 100 bulbs in twenty named varieties (not less than 100 bulbs supplied).		6.50
Breeders. All colors mixed, per 1000, \$37.50.	.60	4.00

Baltimore, Maryland

Elliott Nursery Company
Pittsburgh, Pa.

Gentlemen:

Please send the enclosed order in September or October. Your Breeder tulips are the loveliest I have ever seen. Every passerby stops and looks at them and exclaims over their gorgeous beauty, their length of stem, and how long they remain beautiful blooms.

Yours sincerely,

(Signed) IDA S. HOFFMAN

Keep a Copy of Your Order

THE NARCISSUS SITUATION

As it Appears to the President of the Elliott Nursery Company

"YOU know, of course, that by order of the Federal Department of Agriculture, French and Dutch Narcissus are outlawed and their importation prohibited. The fact that I personally consider this order arbitrary and unjust and not warranted by the facts in the case is, perhaps, irrelevant, since the order is law. The important thing is that the fine imported bulbs which our company has been accustomed to furnishing you in the past are not available in the United States, anywhere, at any price.

Knowing, however, that you are interested in Narcissus and knowing further that you look to us for late and accurate information concerning any or all horticultural developments, we have investigated American grown bulbs as thoroughly as possible in the time at our disposal. However, the tests of one season cannot be considered conclusive and it will take a number of years before all the facts concerning these bulbs can be known with precision. Narcissus bulbs are being grown in Florida, the Carolinas, Virginia, Maryland, New York, Michigan, Texas, California, Washington and Oregon and, in a lesser degree, in other states; and the bulbs from the several sections have been tested and the results noted.

Narcissus bulbs from some sections proved to be very bad, worse than we feared they might be. On the other hand, bulbs from other sections proved to be surprisingly good; the results comparing very favorably with the results secured from the best imported bulbs. Indeed, from special sections, the results were so good that the younger members of this company are rather insistent that we catalogue them with no reservations of any sort and give them our usual guarantee. However, the present reputation and prestige of the Elliott Nursery Company was not built up by recommending materials the qualities of which were not completely proved, and, knowing this fact, I cannot allow these men to have their way.

The Narcissus listed below will be secured from the American sources which tests indicate are producing bulbs of high quality. I believe that they will be satisfactory, nearly, if not quite, as satisfactory as the imported. I know that, at the present time, no finer Narcissus are available in America."

	Doz.	100		Doz.	100
Conspicuous (Barrii). Broad primrose petals and elegantly expanded crown, heavily stained orange-scarlet, extra fine.....	\$1.75	\$12.00	Paper White Grandiflora. Clusters of fragrant white flowers; fine for forcing; can be had in bloom early in January.....	\$1.25	\$9.00
Emperor. This is the largest and finest deep yellow trumpet-flowered Daffodil in cultivation, and is really superb, both in foliage and flower. Either for the garden or for naturalizing, it is one of the very finest varieties and cannot be commended too highly.....	2.00	15.00			
Golden Spur. This is one of the most valuable of the Trumpet Narcissi, with magnificent, deep yellow trumpet, the brim expanding like Maximum, and large, spreading, full, deep yellow petals. It is free-flowering and splendid both for house culture and outdoors, and is one of the most desirable varieties for naturalizing. A charming, richly perfumed flower.....	2.00	15.00			
King Alfred. Uniform golden-yellow. This variety stands as yet unrivalled in size and beauty. Its round fleshy petals, its immense, elegantly recurved and beautifully fluted trumpet, its whole sturdy growth, every part of this plant shows its superiority. It can be rightly called the King of Daffodils.....	3.75	25.00			
Sir Watkin (Welsh Giant Daffodil). Very large petals of a rich sulphur-yellow, tinged with orange. Immense flowers sometimes 5 inches across. One of the most distinct Daffodils.....	1.95	14.00			
Spring Glory. One of the newer varieties and the best of all the Bicolors. Perianth creamy white, trumpet rich yellow, delicately perfumed. Unsurpassed for pot culture or growing outdoors in the garden, or the grass.....	2.85	19.00			



Narcissus King Alfred

5% Discount for Cash Before July 1st



CANDIDUM: THE ANCIENT EASTER LILY

THE beautiful and historic Easter Lily needs no introduction here, for although the horticulturists call it *Lilium Candidum*, it is known all over the world as the Annunciation or Madonna Lily. Notwithstanding its rich beauty, many flower lovers deny themselves this fragrant Lily because of the incorrect belief that it must be planted early in September. At our own Nursery we have planted as many as 10,000 in November to get beautiful blooms the following June, when we sold them to wholesale cut-flower buyers for double the price of the original bulbs!

Elliott's *Candidum* bulbs are really the finest that come to America. We obtain them from both northern and southern France and supply a much larger bulb than it is customary to sell.

	Each	Doz.	100
Selected bulbs.....	\$.50	\$3.00	\$20.00
Extra large selected bulbs.....	.40	3.75	30.00

JAPANESE LILIES

DELICACY is the outstanding feature of everything Japanese, and the *Auratum* Lily is no exception to this rule. Known as the Gold-banded Lily of Japan, it has a large, graceful, ivory-white

flower closely dotted with chocolate-crimson spots; the center striped with golden yellow; a truly gorgeous creation!

Because of transportation difficulties, Japanese Lilies frequently do not arrive in time for Fall planting, in which event we carefully pack them in sand and store them until Spring when they are distributed.

Auratum. Gold-banded Lily of Japan. Large and graceful flowers of delicate ivory-white, closely dotted with chocolate-crimson spots; the center striped golden yellow. 3-4 feet. July and August.

	Each	Doz.	100
8 to 9 inches.....	\$.25	\$2.50	\$18.00
9 to 11 inches.....	.40	4.00	30.00
11 to 13 inches.....	.50	5.00	

Auratum Platyphyllum. The choicest of all *Auratums*. Enormous white flowers richly spotted yellow. Extra Selected Bulbs.....

	.75	7.50	
--	-----	------	--

Longiflorum. Pure white, trumpet-shaped flowers, similar to the Bermuda Easter Lily. Excellent for cutting.

June and July 6 to 8 inches.....	\$.20	\$1.75	\$12.00
7 to 9 inches.....	.25	2.75	16.00

Speciosum album. Large, pure white blooms; extremely attractive.

7 to 9 inches.....	.50	5.50	
--------------------	-----	------	--

We Go 8000 Miles to Better Your Garden

	Each	Doz.	100
Speciosum Melpomene. White blooms heavily spotted and overlaid with crimson. 7 to 9 inches.....	\$.25	\$2.75	\$19.00
9 to 11 inches.....	.40	4.00	30.00
Speciosum rubrum, or roseum. Almost like <i>Lilium speciosum melpomene</i> . 7 to 9 inches.....	.25	2.75	19.00
9 to 11 inches.....	.40	4.00	30.00
11 to 13 inches.....	.55	5.50	

Native & American-grown Lilies

Batemanii. A vigorous sturdy lily growing from 3 to 4 feet, bearing from 5 to 10 splendid reddish-orange flowers in July and August.....		3.50	25.00
Canadense flavum. The beautiful native Lily, with graceful, charming yellow flowers.....		2.25	14.00
Canadense rubrum. Similar in all respects to the preceding variety, save that the flowers are red.....		2.50	15.00
Canadense, mixed. Flowers of various shades of yellow, orange and red, spotted with black and brown. Excellent for mass plantings or shrubbery borders, first size Bulbs.....		2.00	12.00
Davuricum. Makes a strong growth from two to three feet high and is exceedingly easy to grow. The blooms are in umbels of three to five upright, scarlet flowers, attractively dotted with black, \$0.60.....		6.50	
Elegans, Leonard Joerg. Rich apricot blooms, attractively spotted and dotted	.30	3.00	20.00
Elegans. Mixed colors. An attractive variety of colors suitable for a group planting. Extra selected.....		2.75	20.00
Hansonii. Bright orange flowers spotted with brownish purple. Occasionally the bulbs remain dormant the first year after planting, but they will come up vigorously the following season.....	.75	7.50	55.00
Henryi. The flowers are dark reddish yellow, marked with small brown spots	.75	7.50	55.00
Philadelphicum. The plant usually bears two to five upright flowers which are pale yellow, spotted maroon and tipped with bright scarlet, first sized Bulbs.....		2.00	12.00
Tigrinum splendens. Well-known single Tiger Lily. Attractive reddish orange blooms spotted with black, extra large Bulbs.....		3.00	20.00
Tigrinum splendens fl.-pl. Double Tiger Lily. Orange red blooms spotted with black. Extra large Bulbs.....		3.00	20.00

LILIUM FORMOSUM

Formosum. Japanese Easter Lily. Excellent for forcing or planting outdoors. Large, white, trumpet-shaped blooms. 7 to 9 inches.....	.25	2.50	16.00
9 to 10 inches.....	.30	3.25	23.00

LILIUM HARRISII

(True Bermuda Easter Lily)

These Lilies are suitable for growing in greenhouse only.

Bulbs 6 to 7 inches in circumference.....	.20	2.25	15.00
Bulbs 7 to 9 inches in circumference.....	.30	3.25	25.00

Canton, Ohio

Elliott Nursery Company
Pittsburgh, Pa.

Dear Sirs:

Am enclosing order.
It would perhaps interest you to know that I bought my first Jap. lilies and Jap. Iris from J. Wilkinson Elliott Apr. 1888 in the little store room on Sixth St., Pittsburgh, near the bridge.
At least three of those are still blooming in my mother's garden at Salem, O.
As late as 1896 we still bought from the original Book of native water colors which Mr. Elliott would loan us by mail to choose from.
Am still as enthusiastic as ever
Very truly yours,
(Signed) E. W. Harris

LILY-OF-THE-VALLEY

	Per 25	100	1,000
American Pips. Ready in October. For outdoor planting only. 2 year old pips.	\$1.00	\$3.25	\$30.00
Extra selected Berlin Pips. Ready in December. For forcing (American pips will not force).....	1.75	6.50	60.00
Large clumps. American grown. Ready in December. Each \$0.50; dozen \$5.00.			



Lilium Auratum

5% Discount for Cash before July 1st, 1928

SUPERBUM

The Lily That Defies Neglect!

SUPERBUM is unquestionably one of the most satisfactory and unusual Lilies. It can be planted in the garden or the meadows; in wet swamps or dry ground; on the edge of the woods or in cultivated ground. It will thrive wherever you put it—and it will grow without care or attention! On top of all this it is truly a superb lily, as its name suggests; it often grows over eight feet high, producing 20 to 30 orange-red flowers in the one month when flowers are apt to be scarce—July.

By virtue of our yearly contract to have 25,000 of these grand Lilies grown especially for us, we are able to offer them at a price low enough to make it available for naturalizing in quantities.

	Per Doz.	25	100
Extra Selected Bulbs....	\$2.75	\$5.00	\$18.00
	per 500, \$75.00		



Lilium Regale

The HARDY REGALE

A Lily for Forcing or Outside Planting

FLOWER fanciers generally consider the Regale the most beautiful of all Lilies, and as a result the limited supply has always been snapped up promptly by the more wealthy buyers. Perseverance, however, has finally resulted in the Elliott Nursery's getting control of a moderate source of supply of Regale bulbs, and although this flower is still somewhat new and rare, we can offer them at a lower price by contracting for the entire output of this particular grower.

	Each	Doz.
Selected Bulbs 5-6 inches.....	.50	5.00
Extra Selected Bulbs 6-8 inches.....	.65	6.50



Lilium Superbum

Elliott's Twice Tested Bulbs Are Safe

TERMS OF PAYMENT, Etc.

Please read before ordering



HYACINTHS, Tulips, Crocuses, etc. The prices quoted in this list on all Dutch Bulbs, Bermuda Lilies and other bulbs are for advance orders, which must reach us not later than July 1, 1928. To make these very low prices, we must have our orders in advance, as we cannot take any risk of having stock unsold on our hands. The bulbs will be delivered upon arrival, and need not be paid for until after delivery. Prices quoted include duty and all charges, except freight, expressage, or postage, from Pittsburgh. On small lots of bulbs sent by mail, postage will be charged at cost, including insurance.

TIME OF DELIVERY: Bermuda Lilies arrive in August; Roman Hyacinths, Freesias, Candidum Lilies and Paper-White Narcissi in September; Dutch Bulbs, Hyacinths, Tulips, etc., in October. In ordering please state whether you wish your bulbs shipped as they arrive or all in one shipment. In absence of instructions, we will send all bulbs in one shipment, except

Japanese Lilies and Lily-of-the-Valley, which will be shipped upon arrival, in November, December, or the following Spring. Transportation conditions are still so unsettled that we cannot guarantee time of delivery, but in the event of late delivery, northern orders will be shipped first, and extreme southern ones last.

SHIPPING INSTRUCTIONS: Please send full shipping instructions. State whether goods are to be shipped by express or parcel post, and by what route. In the absence of instructions, we will ship by whatever method and route we think best. Please print your name and address on your order. Many times it is exceedingly difficult to read these two important points of an order, and a shipment may go astray.

TERMS OF PAYMENT: Our terms of payment are invariably cash on delivery, which does not mean that we ship C.O.D., as we will not do so under any circumstances. We deliver the goods and mail bills at the same time, and expect payment within a few days. People unknown to us will please send references with their orders. Those who wish to send cash in advance with their orders will be allowed a discount of five per cent. from the prices quoted on this list on all orders made up from this catalog, received before July 1, 1928.

GUARANTEE: We guarantee all trees, shrubs, plants, and bulbs furnished by us to be first class, and true to name.

We do not guarantee stock to grow, or results in any way. No complaint will be entertained that is not made immediately upon receipt of stock.

There are so many causes for failure over which we have no control that we can assume no responsibility after stock is delivered in good order. Poor soil, unfavorable weather, ignorant or careless culture, all contribute to failure, and are all beyond our control.

EARLY ORDERS: The earlier orders are given, the better we can have them filled. Some of our customers are now giving us orders to be delivered next Spring. Our representative usually sails for Europe early in June and personally selects the stock for all import orders received by July 1st.

PRICES: Six plants of a kind will be furnished at the dozen rate; fifty or more at the hundred rate, and five hundred or more at the thousand rate. Less than six plants of one kind or variety will be sold only at the single rate.

CANCELLATIONS: No request for cancellation can be granted after July 10th, when the final orders are sent to Holland.

Import orders taken subject to the failure of the crop.

CULTURAL DIRECTIONS: With each shipment of bulbs we send printed cultural directions, giving full instructions for growing in the house as well as outdoors.

PARCEL POST: Bulbs and plants can now be sent by parcel post, and when it is advantageous we always do so.

Glorify Your Garden with Lovely DELPHINIUM

(Perennial Larkspur)

*Knee high!
Head high!
Ladder high!
Stately—
Exquisite—
Wonderful!
Perennial Larkspur
Most beautiful of plants*

*For
September
and
October
Delivery*

BLOOMING all summer, coming up year after year, sending aloft successive shafts of incredible color to a height of five, six, eight feet—it is doubtful if any other plant so superb as Delphinium ever graced a garden.

Few people are aware of the perfection to which this ancient flower has been brought by modern culture, how easily it can be planted and grown, and how lasting a delight the gardener secures who plants Delphinium. If everyone knew, tall, hardy Delphinium would be more in evidence everywhere.

* * *

We offer specially selected plants grown from seeds of famous named varieties for autumn planting. Will grow anywhere but do best in rich garden soil. Every imaginable tint and shade of blue, lavender, and purple. We promise you'll find positive joy in their extraordinary bloom. Directions—few and simple—with each shipment.

Elliott's Magnificent Varieties

Improved English Hybrids—Range in color from very light blue to very dark blue, overlaid irregularly with tones of pink and lavender, rose, and lilac. Black spots on pistil and anthers at center of flower. Many blossoms show white secondary petals of white spots at bases of major petals. A wonderful wealth of color variation in the English Hybrids.

Fine Mixed English Hybrids—Dozen Strong Plants \$2.50, Fifty Strong Plants \$7.50, One Hundred Strong Plants \$15.00. Extra-Selected Varieties, each .50 cents. \$5.00 per dozen.

Belladonna—Uniform light sky-blue. The most universally admired and desired of the solid-color varieties.

\$2.50 per dozen, \$7.50 per 50, \$15.00 per 100

Bellamosa—(The improved Formosum)—For solid dark blue color, unequalled among Delphiniums—positively the best.

\$2.50 per dozen, \$7.50 per 50, \$15.00 per 100

*"And larkspurs, many hued, shall drive
Gloom from the groves!"*

